

## CLDN2 antibody

Catalog No: #39008

Package Size: #39008-1 50ul #39008-2 100ul

Orders: [order@signalwayantibody.com](mailto:order@signalwayantibody.com)Support: [tech@signalwayantibody.com](mailto:tech@signalwayantibody.com)

## Description

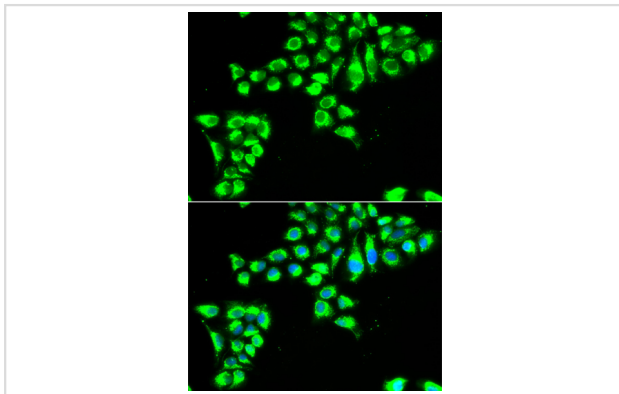
Product Name	CLDN2 antibody
Host Species	Rabbit
Clonality	Polyclonal
Purification	Antibodies were purified by affinity purification using immunogen.
Applications	WB IF
Species Reactivity	Hu
Specificity	The antibody detects endogenous level of total CLDN2 protein.
Immunogen Type	Recombinant Protein
Immunogen Description	Recombinant protein of human CLDN2.
Target Name	CLDN2
Accession No.	Swiss-Prot#: P57739NCBI Gene ID: 9075
Uniprot	P57739
GeneID	9075;
SDS-PAGE MW	24kd
Concentration	1.0mg/ml
Formulation	Supplied at 1.0mg/mL in phosphate buffered saline (without Mg <sup>2+</sup> and Ca <sup>2+</sup> ), pH 7.4, 150mM NaCl, 0.02% sodium azide and 50% glycerol.
Storage	Store at -20°C

## Application Details

Western blotting: □1:500 - 1:2000

Immunofluorescence: □1:50 - 1:100

## Images



Immunofluorescence analysis of HeLa cell using CLDN2 antibody. Blue: DAPI for nuclear staining.

## Background

---

This gene product belongs to the claudin protein family whose members have been identified as major integral membrane proteins localized exclusively at tight junctions. Claudins are expressed in an organ-specific manner and regulate tissue-specific physiologic properties of tight junctions. This protein is expressed in the intestine. Alternatively spliced transcript variants with different 5' untranslated region have been found for this gene.

---

Note: This product is for in vitro research use only