

CPSF3L antibody

Catalog No: #39012

Package Size: #39012-1 50ul #39012-2 100ul

Orders: order@signalwayantibody.com

Support: tech@signalwayantibody.com

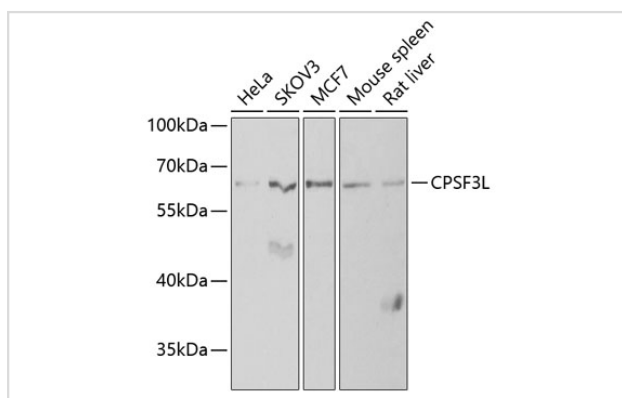
Description

Product Name	CPSF3L antibody
Host Species	Rabbit
Clonality	Polyclonal
Purification	Antibodies were purified by affinity purification using immunogen.
Applications	WB,IF
Species Reactivity	Human,Mouse,Rat
Specificity	The antibody detects endogenous level of total CPSF3L protein.
Immunogen Type	Recombinant Protein
Immunogen Description	Recombinant protein of human CPSF3L.
Target Name	CPSF3L
Other Names	RC68; INT11; RC-68; INTS11; CPSF73L;
Accession No.	Swiss-Prot#: Q5TA45NCBI Gene ID: 54973
Uniprot	Q5TA45
GeneID	54973;
SDS-PAGE MW	67kd
Concentration	1.0mg/ml
Formulation	Supplied at 1.0mg/mL in phosphate buffered saline (without Mg ²⁺ and Ca ²⁺), pH 7.4, 150mM NaCl, 0.02% sodium azide and 50% glycerol.
Storage	Store at -20°C

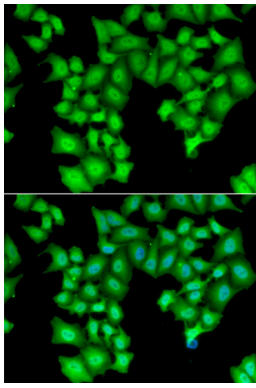
Application Details

WB □ 1:500 - 1:2000IF □ 1:10 - 1:100

Images



Western blot analysis of extracts of various cell lines, using CPSF3L at 1:1000 dilution.



Immunofluorescence analysis of HeLa cells using CPSF3L .
Blue: DAPI for nuclear staining.

Background

The Integrator complex contains at least 12 subunits and associates with the C-terminal domain of RNA polymerase II large subunit (POLR2A; MIM 180660) and mediates the 3-prime end processing of small nuclear RNAs U1 (RNU1; MIM 180680) and U2 (RNU2; MIM 180690). INTS11, or CPSF3L, is the catalytic subunit of the Integrator complex (Baillat et al., 2005)

Note: This product is for in vitro research use only