

CTNNBL1 antibody

Catalog No: #39017

Package Size: #39017-1 50ul #39017-2 100ul

Orders: order@signalwayantibody.com

Support: tech@signalwayantibody.com

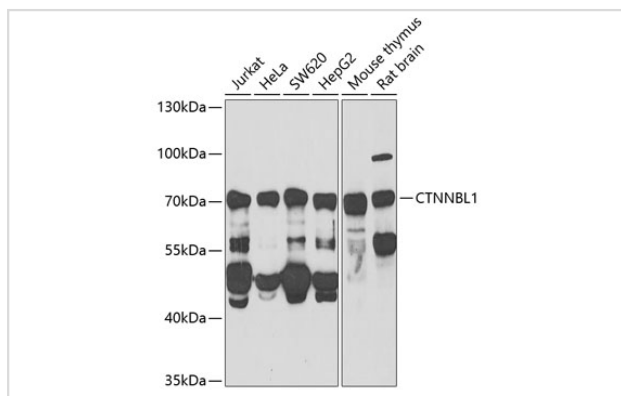
Description

| | |
|-----------------------|--|
| Product Name | CTNNBL1 antibody |
| Host Species | Rabbit |
| Clonality | Polyclonal |
| Purification | Antibodies were purified by affinity purification using immunogen. |
| Applications | WB,IF |
| Species Reactivity | Human,Mouse,Rat |
| Specificity | The antibody detects endogenous level of total CTNNBL1 protein. |
| Immunogen Type | Recombinant Protein |
| Immunogen Description | Recombinant protein of human CTNNBL1. |
| Target Name | CTNNBL1 |
| Other Names | NAP; P14L; PP8304; C20orf33; dJ633O20.1; |
| Accession No. | Swiss-Prot#: Q8WYA6NCBI Gene ID: 56259 |
| Uniprot | Q8WYA6 |
| GeneID | 56259; |
| SDS-PAGE MW | 65kd |
| Concentration | 1.0mg/ml |
| Formulation | Supplied at 1.0mg/mL in phosphate buffered saline (without Mg ²⁺ and Ca ²⁺), pH 7.4, 150mM NaCl, 0.02% sodium azide and 50% glycerol. |
| Storage | Store at -20°C |

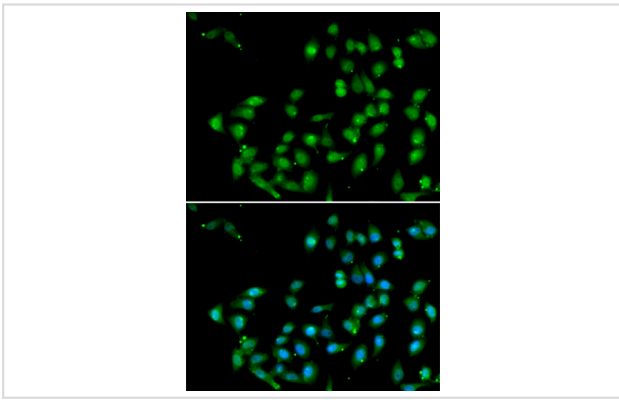
Application Details

WB □ 1:500 - 1:2000 IF □ 1:50 - 1:200

Images



Western blot analysis of extracts of various cell lines, using CTNNBL1 at 1:1000 dilution.



Immunofluorescence analysis of U2OS cells using CTNNB1 .
Blue: DAPI for nuclear staining.

Background

The protein encoded by this gene is a component of the pre-mRNA-processing factor 19-cell division cycle 5-like (PRP19-CDC5L) protein complex, which activates pre-mRNA splicing and is an integral part of the spliceosome. The encoded protein is also a nuclear localization sequence binding protein, and binds to activation-induced deaminase and is important for antibody diversification. This gene may also be associated with the development of obesity. Alternative splicing results in multiple transcript variants. A pseudogene of this gene has been defined on the X chromosome.

Note: This product is for in vitro research use only