

EEF1B2 antibody

Catalog No: #39022

Package Size: #39022-1 50ul #39022-2 100ul

Orders: order@signalwayantibody.com

Support: tech@signalwayantibody.com

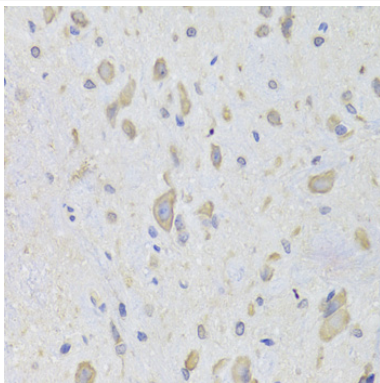
Description

Product Name	EEF1B2 antibody
Host Species	Rabbit
Clonality	Polyclonal
Purification	Antibodies were purified by affinity purification using immunogen.
Applications	WB,IHC,IF
Species Reactivity	Human,Mouse,Rat
Specificity	The antibody detects endogenous level of total EEF1B2 protein.
Immunogen Type	Recombinant Protein
Immunogen Description	Recombinant protein of human EEF1B2.
Target Name	EEF1B2
Other Names	EF1B; EEF1B; EEF1B1;
Accession No.	Swiss-Prot#: P24534NCBI Gene ID: 1933
Uniprot	P24534
GeneID	1933;
SDS-PAGE MW	24kd
Concentration	1.0mg/ml
Formulation	Supplied at 1.0mg/mL in phosphate buffered saline (without Mg ²⁺ and Ca ²⁺), pH 7.4, 150mM NaCl, 0.02% sodium azide and 50% glycerol.
Storage	Store at -20°C

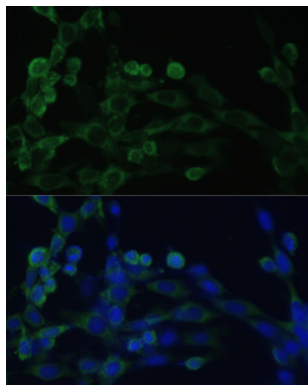
Application Details

WB 1:500 - 1:2000 IHC 1:50 - 1:200 IF 1:50 - 1:200

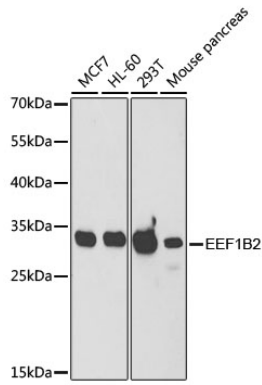
Images



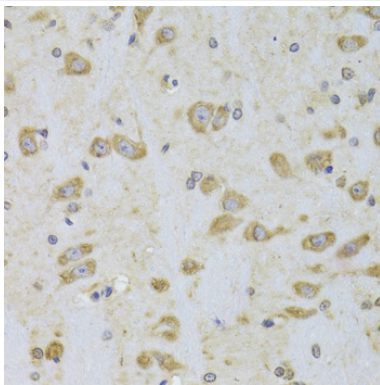
Immunohistochemistry of paraffin-embedded rat spinal cord using EEF1B2 at dilution of 1:100 (40x lens).



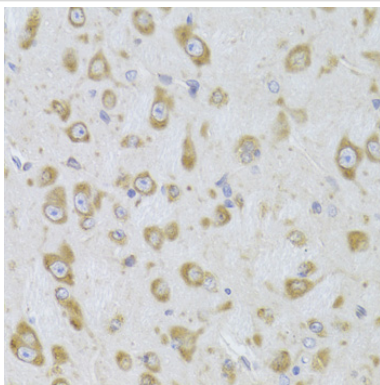
Immunofluorescence analysis of NIH/3T3 cells using EEF1B2 at dilution of 1:100. Blue: DAPI for nuclear staining.



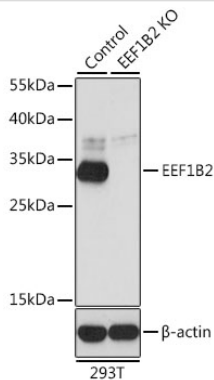
Western blot analysis of extracts of various cell lines, using EEF1B2 at 1:1000 dilution.



Immunohistochemistry of paraffin-embedded rat brain using EEF1B2 at dilution of 1:100 (40x lens).



Immunohistochemistry of paraffin-embedded mouse brain using EEF1B2 at dilution of 1:100 (40x lens).



Western blot analysis of extracts from normal (control) and EEF1B2 knockout (KO) 293T cells, using EEF1B2 at 1:1000 dilution.

Background

This gene encodes a translation elongation factor. The protein is a guanine nucleotide exchange factor involved in the transfer of aminoacylated tRNAs to the ribosome. Alternative splicing results in three transcript variants which differ only in the 5' UTR.

Note: This product is for in vitro research use only