

## ENTPD2 antibody

Catalog No: #39024

Package Size: #39024-1 50ul #39024-2 100ul

Orders: order@signalwayantibody.com

Support: tech@signalwayantibody.com

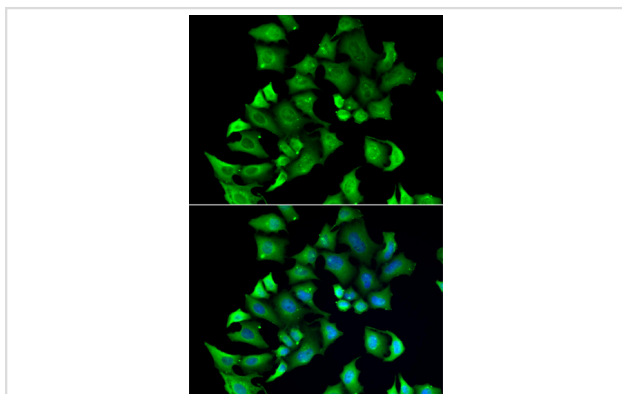
## Description

Product Name	ENTPD2 antibody
Host Species	Rabbit
Clonality	Polyclonal
Purification	Antibodies were purified by affinity purification using immunogen.
Applications	WB,IF
Species Reactivity	Human
Specificity	The antibody detects endogenous level of total ENTPD2 protein.
Immunogen Type	Recombinant Protein
Immunogen Description	Recombinant protein of human ENTPD2.
Target Name	ENTPD2
Other Names	CD39L1; NTPDase-2;
Accession No.	Swiss-Prot#: Q9Y5L3NCBI Gene ID: 954
Uniprot	Q9Y5L3
GeneID	954;
SDS-PAGE MW	53kd
Concentration	1.0mg/ml
Formulation	Supplied at 1.0mg/mL in phosphate buffered saline (without Mg <sup>2+</sup> and Ca <sup>2+</sup> ), pH 7.4, 150mM NaCl, 0.02% sodium azide and 50% glycerol.
Storage	Store at -20°C

## Application Details

WB □ 1:500 - 1:2000IF □ 1:50 - 1:100

## Images



Immunofluorescence analysis of A549 cells using ENTPD2 .  
Blue: DAPI for nuclear staining.

## Background

---

The protein encoded by this gene is the type 2 enzyme of the ecto-nucleoside triphosphate diphosphohydrolase family (E-NTPDase). E-NTPDases are a family of ecto-nucleosidases that hydrolyze 5'-triphosphates. This ecto-ATPase is an integral membrane protein. Alternative splicing of this gene results in multiple transcript variants.

---

Note: This product is for in vitro research use only