

## GLP2R antibody

Catalog No: #39037

Package Size: #39037-1 50ul #39037-2 100ul

Orders: order@signalwayantibody.com

Support: tech@signalwayantibody.com

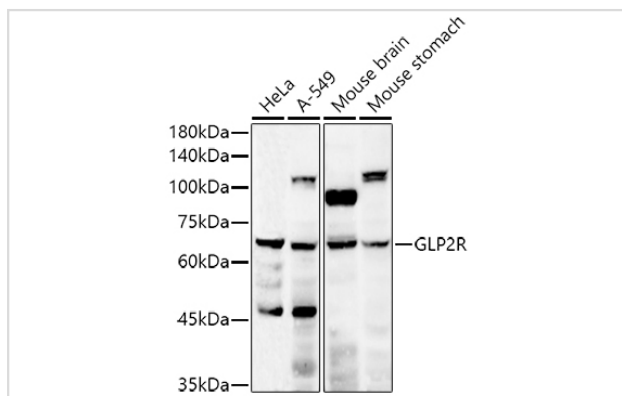
## Description

Product Name	GLP2R antibody
Host Species	Rabbit
Clonality	Polyclonal
Isotype	IgG
Purification	Affinity purification
Applications	WB,IHC
Species Reactivity	Human,Mouse
Specificity	The antibody detects endogenous level of total GLP2R protein.
Immunogen Type	Recombinant Protein
Immunogen Description	Recombinant fusion protein of human GLP2R (NP_004237.1).
Target Name	GLP2R
Other Names	GLP2R
Accession No.	Uniprot:O95838GeneID:9340
Uniprot	O95838
GeneID	9340
SDS-PAGE MW	63KDa
Concentration	1.0mg/ml
Formulation	PBS with 0.02% sodium azide,50% glycerol,pH7.3.
Storage	Store at -20°C. Avoid freeze / thaw cycles.

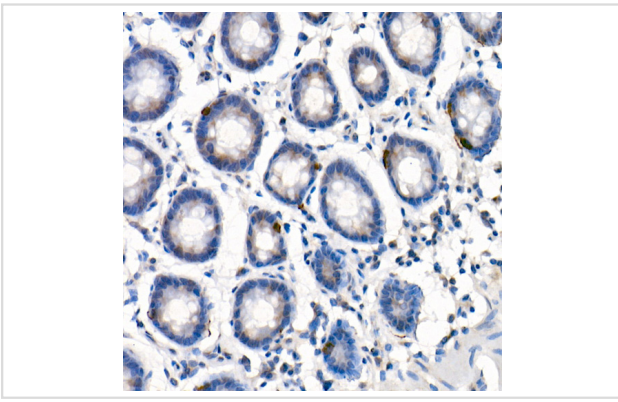
## Application Details

WB □ 1:500 - 1:2000 IHC □ 1:50 - 1:200

## Images



Western blot analysis of extracts of various cell lines, using GLP2R antibody.



Immunohistochemistry of paraffin-embedded human colon using GLP2R Rabbit pAb.

## Background

This gene encodes a G protein-coupled receptor that is closely related to the glucagon receptor and binds to glucagon-like peptide-2 (GLP2). Signalling through GLP2 stimulates intestinal growth and increases villus height in the small intestine, concomitant with increased crypt cell proliferation and decreased enterocyte apoptosis.

Note: This product is for in vitro research use only