

GLUD2 antibody

Catalog No: #39038

Package Size: #39038-1 50ul #39038-2 100ul

Orders: order@signalwayantibody.com

Support: tech@signalwayantibody.com

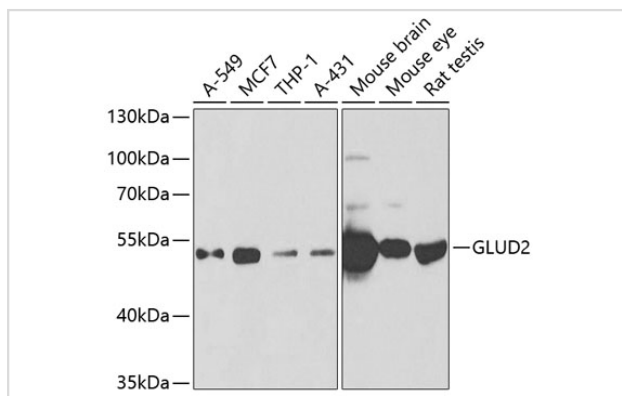
Description

Product Name	GLUD2 antibody
Host Species	Rabbit
Clonality	Polyclonal
Purification	Antibodies were purified by affinity purification using immunogen.
Applications	WB,IHC,IF
Species Reactivity	Human,Mouse,Rat
Specificity	The antibody detects endogenous level of total GLUD2 protein.
Immunogen Type	Recombinant Protein
Immunogen Description	Recombinant protein of human GLUD2.
Target Name	GLUD2
Other Names	GDH2; GLUDP1;
Accession No.	Swiss-Prot#: P49448NCBI Gene ID: 2747
Uniprot	P49448
GeneID	2747;
SDS-PAGE MW	61kd
Concentration	1.0mg/ml
Formulation	Supplied at 1.0mg/mL in phosphate buffered saline (without Mg ²⁺ and Ca ²⁺), pH 7.4, 150mM NaCl, 0.02% sodium azide and 50% glycerol.
Storage	Store at -20°C

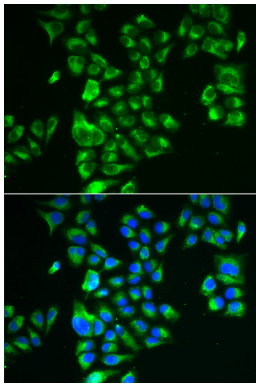
Application Details

WB 1:500 - 1:2000IHC 1:50 - 1:200IF 1:10 - 1:100

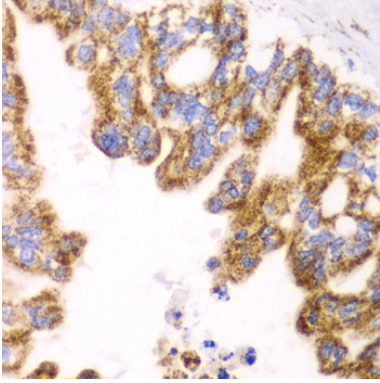
Images



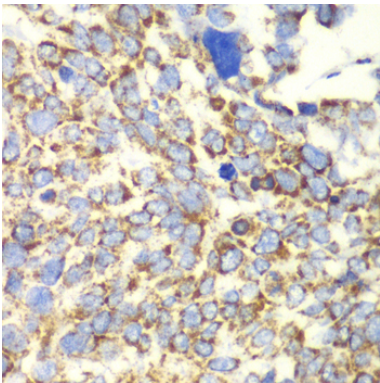
Western blot analysis of extracts of various cell lines, using GLUD2 antibody at 1:1000 dilution.



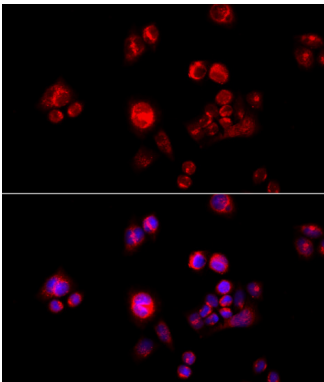
Immunofluorescence analysis of A549 cells using GLUD2 .
Blue: DAPI for nuclear staining.



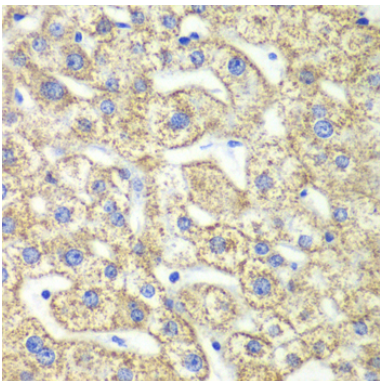
Immunohistochemistry of paraffin-embedded human liver cancer using GLUD2 at dilution of 1:100 (40x lens).



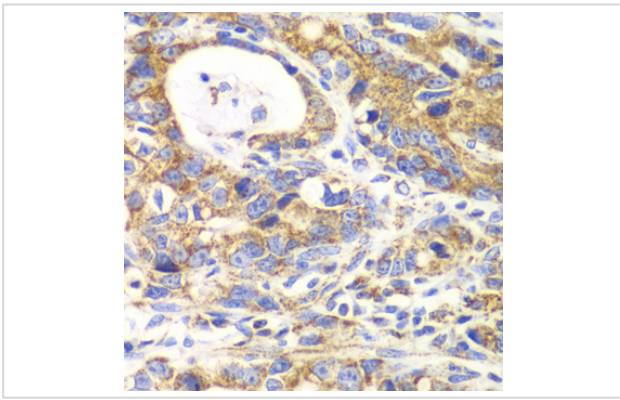
Immunohistochemistry of paraffin-embedded human esophageal cancer using GLUD2 at dilution of 1:100 (40x lens).



Immunofluorescence analysis of HeLa cells using GLUD2 at dilution of 1:100 (40x lens). Blue: DAPI for nuclear staining.



Immunohistochemistry of paraffin-embedded human liver damage using GLUD2 at dilution of 1:100 (40x lens).



Immunohistochemistry of paraffin-embedded human gastric cancer using GLUD2 at dilution of 1:100 (40x lens).

Background

The protein encoded by this gene is localized to the mitochondrion and acts as a homo-hexamer to recycle glutamate during neurotransmission. The encoded enzyme catalyzes the reversible oxidative deamination of glutamate to alpha-ketoglutarate. This gene is intronless.

Note: This product is for in vitro research use only