

## GMPS antibody

Catalog No: #39039

Package Size: #39039-1 50ul #39039-2 100ul

Orders: [order@signalwayantibody.com](mailto:order@signalwayantibody.com)Support: [tech@signalwayantibody.com](mailto:tech@signalwayantibody.com)

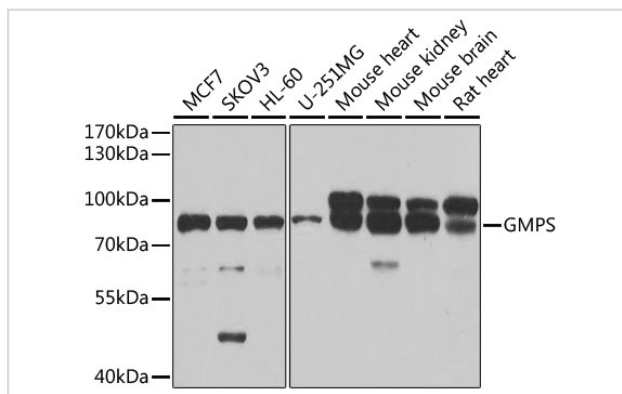
## Description

Product Name	GMPS antibody
Host Species	Rabbit
Clonality	Polyclonal
Purification	Antibodies were purified by affinity purification using immunogen.
Applications	WB
Species Reactivity	Human,Mouse,Rat
Specificity	The antibody detects endogenous level of total GMPS protein.
Immunogen Type	Recombinant Protein
Immunogen Description	Recombinant protein of human GMPS.
Target Name	GMPS
Accession No.	Swiss-Prot#: P49915NCBI Gene ID: 8833
Uniprot	P49915
GeneID	8833;
SDS-PAGE MW	76kd
Concentration	1.0mg/ml
Formulation	Supplied at 1.0mg/mL in phosphate buffered saline (without Mg <sup>2+</sup> and Ca <sup>2+</sup> ), pH 7.4, 150mM NaCl, 0.02% sodium azide and 50% glycerol.
Storage	Store at -20°C

## Application Details

WB □ 1:500 - 1:2000 IP □ 1:50 - 1:100

## Images



Western blot analysis of extracts of various cell lines, using GMPS at 1:1000 dilution.

## Background

In the de novo synthesis of purine nucleotides, IMP is the branch point metabolite at which point the pathway diverges to the synthesis of either

guanine or adenine nucleotides. In the guanine nucleotide pathway, there are 2 enzymes involved in converting IMP to GMP, namely IMP dehydrogenase (IMPD1), which catalyzes the oxidation of IMP to XMP, and GMP synthetase, which catalyzes the amination of XMP to GMP.

---

Note: This product is for in vitro research use only