

GPAM antibody

Catalog No: #39042

Package Size: #39042-1 50ul #39042-2 100ul

Orders: order@signalwayantibody.comSupport: tech@signalwayantibody.com

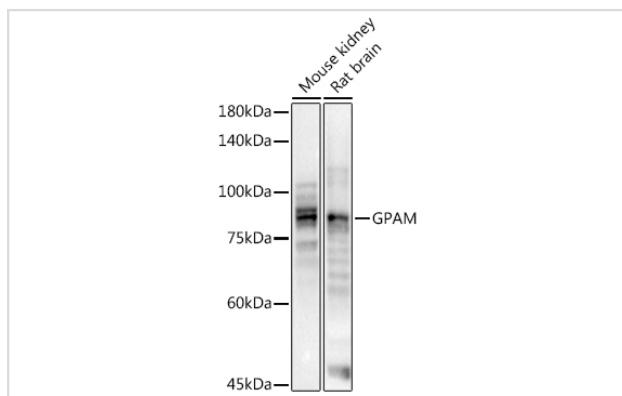
Description

Product Name	GPAM antibody
Host Species	Rabbit
Clonality	Polyclonal
Isotype	IgG
Purification	Affinity purification
Applications	WB
Species Reactivity	Human,Mouse,Rat
Specificity	The antibody detects endogenous level of total GPAM protein.
Immunogen Type	Recombinant Protein
Immunogen Description	Recombinant fusion protein of human GPAM (NP_001231878.1).
Target Name	GPAM
Other Names	GPAM;GPAT;GPAT1
Accession No.	Uniprot:Q9HCL2GeneID:57678
Uniprot	Q9HCL2
GeneID	57678
SDS-PAGE MW	94kDa
Concentration	1.0mg/ml
Formulation	PBS with 0.02% sodium azide,50% glycerol,pH7.3.
Storage	Store at -20°C. Avoid freeze / thaw cycles.

Application Details

WB 1:500 - 1:2000

Images



Western blot analysis of extracts of various cell lines, using .

Background

This gene encodes a mitochondrial enzyme which prefers saturated fatty acids as its substrate for the synthesis of glycerolipids. This metabolic pathway's first step is catalyzed by the encoded enzyme. Two forms for this enzyme exist, one in the mitochondria and one in the endoplasmic reticulum. Two alternatively spliced transcript variants have been described for this gene.

Note: This product is for in vitro research use only