

eIF2B beta antibody

Catalog No: #22394

Orders: order@signalwayantibody.com

Support: tech@signalwayantibody.com

Description

Product Name	eIF2B beta antibody
Host Species	Rabbit
Clonality	Polyclonal
Purification	Purified by antigen-affinity chromatography.
Applications	WB IHC
Species Reactivity	Hu
Immunogen Type	Recombinant protein
Immunogen Description	Recombinant protein fragment contain a sequence corresponding to a region within amino acids 88 and 293 of Human EIF2B2
Target Name	eIF2B beta
Accession No.	Swiss-Prot:P49770Gene ID:8892
Uniprot	P49770
GeneID	8892;
Concentration	0.4mg/ml
Formulation	Supplied in 0.1M Tris-buffered saline with 20% Glycerol (pH7.0). 0.01% Thimerosal was added as a preservative.
Storage	Store at -20°C for long term preservation (recommended). Store at 4°C for short term use.

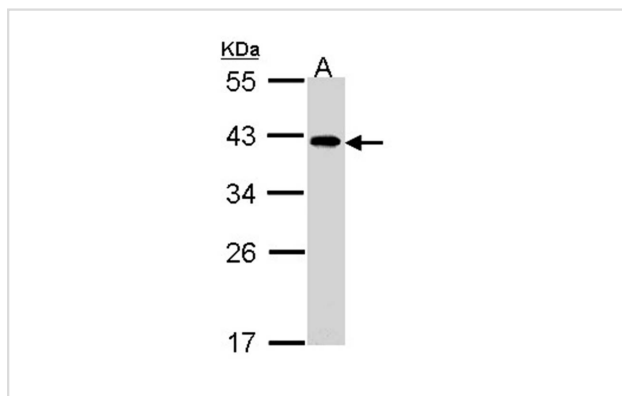
Application Details

Predicted MW: 39kd

Western blotting: 1:500-1:3000

Immunohistochemistry: 1:100-1:250

Images

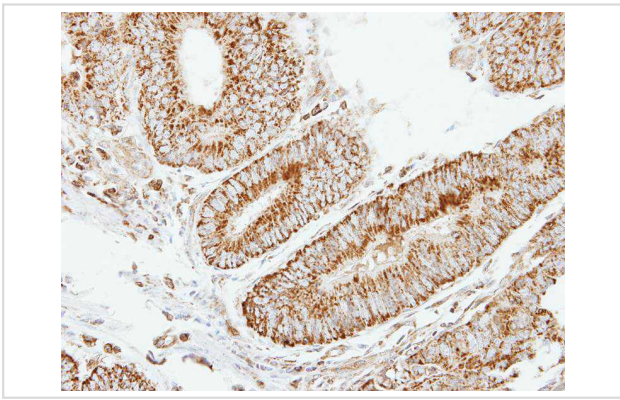


Sample (30 ug of whole cell lysate)

A: A431

10% SDS PAGE

Primary antibody diluted at 1: 1000



Immunohistochemical analysis of paraffin-embedded Colon ca, using EIF2B beta antibody at 1: 250 dilution.

Background

Eukaryotic initiation factor-2B (EIF2B) is a GTP exchange protein essential for protein synthesis. It consists of alpha (EIF2B1; MIM 606686), beta (EIF2B2), gamma (EIF2B3; MIM 606273), delta (EIF2B4; MIM 606687), and epsilon (EIF2B5; MIM 603945) subunits. EIF2B activates its EIF2 (see MIM 603907) substrate by exchanging EIF2-bound GDP for GTP.[supplied by OMIM]

Note: This product is for in vitro research use only