

INTS6 antibody

Catalog No: #39060

Package Size: #39060-1 50ul #39060-2 100ul

Orders: order@signalwayantibody.com

Support: tech@signalwayantibody.com

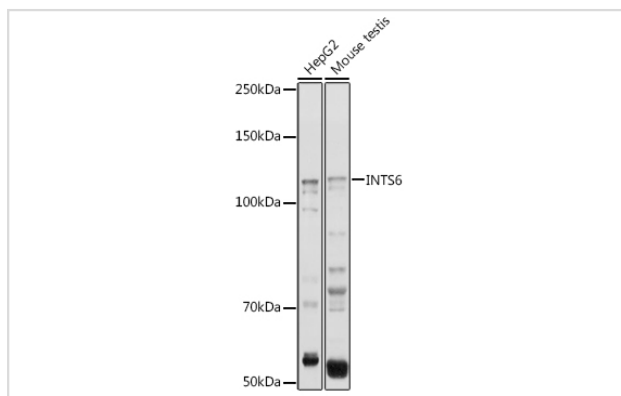
Description

Product Name	INTS6 antibody
Host Species	Rabbit
Clonality	Polyclonal
Isotype	IgG
Purification	Affinity purification
Applications	WB
Species Reactivity	Human,Mouse
Specificity	The antibody detects endogenous level of total INTS6 protein.
Immunogen Type	Recombinant Protein
Immunogen Description	Recombinant fusion protein of human INTS6 (NP_036273.1).
Target Name	INTS6
Other Names	INTS6;DBI-1;DDX26;DDX26A;DICE1;HDB;INT6;Notch12
Accession No.	Uniprot:Q9UL03GeneID:26512
Uniprot	Q9UL03
GeneID	26512
SDS-PAGE MW	117KDa
Concentration	1.0mg/ml
Formulation	PBS with 0.02% sodium azide,50% glycerol,pH7.3.
Storage	Store at -20°C. Avoid freeze / thaw cycles.

Application Details

WB □ 1:500 - 1:2000

Images



Western blot analysis of extracts of various cell lines, using INTS6 antibody.

Background

DEAD box proteins, characterized by the conserved motif Asp-Glu-Ala-Asp (DEAD), are putative RNA helicases. The protein encoded by this gene is a DEAD box protein that is part of a complex that interacts with the C-terminus of RNA polymerase II and is involved in 3' end processing of snRNAs. In addition, this gene is a candidate tumor suppressor and is located in the critical region of loss of heterozygosity (LOH). Multiple transcript variants encoding different isoforms have been found for this gene.

Note: This product is for in vitro research use only