

KIF1B antibody

Catalog No: #39063

Package Size: #39063-1 50ul #39063-2 100ul

Orders: order@signalwayantibody.comSupport: tech@signalwayantibody.com

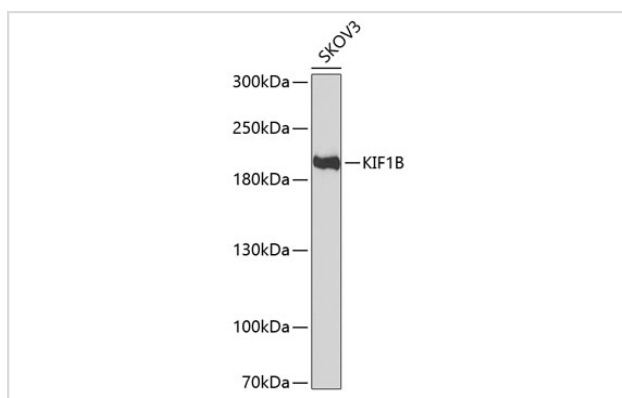
Description

Product Name	KIF1B antibody
Host Species	Rabbit
Clonality	Polyclonal
Isotype	IgG
Purification	Affinity purification
Applications	WB
Species Reactivity	Human,Mouse,Rat
Specificity	The antibody detects endogenous level of total KIF1B protein.
Immunogen Type	Recombinant Protein
Immunogen Description	Recombinant fusion protein of human KIF1B (NP_055889.2).
Target Name	KIF1B
Other Names	KIF1B;CMT2;CMT2A;CMT2A1;HMSNII;KLP;NBLST1
Accession No.	Uniprot:O60333GeneID:23095
Uniprot	O60333
GeneID	23095
SDS-PAGE MW	204kDa
Concentration	1.0mg/ml
Formulation	PBS with 0.02% sodium azide,50% glycerol,pH7.3.
Storage	Store at -20°C. Avoid freeze / thaw cycles.

Application Details

WB □ 1:500 - 1:2000

Images



Western blot analysis of extracts of SKOV3 cells, using KIF1B antibody.

Background

This gene encodes a motor protein that transports mitochondria and synaptic vesicle precursors. Mutations in this gene cause Charcot-Marie-Tooth disease, type 2A1.

Note: This product is for in vitro research use only