

KIF3A antibody

Catalog No: #39064

Package Size: #39064-1 50ul #39064-2 100ul

Orders: order@signalwayantibody.comSupport: tech@signalwayantibody.com

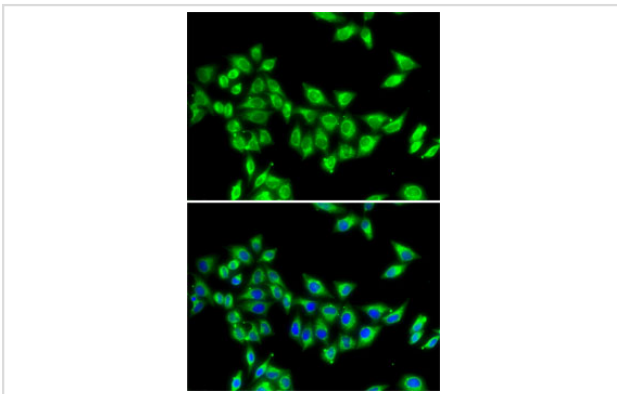
Description

Product Name	KIF3A antibody
Host Species	Rabbit
Clonality	Polyclonal
Purification	Antibodies were purified by affinity purification using immunogen.
Applications	WB,IF
Species Reactivity	Human,Mouse,Rat
Specificity	The antibody detects endogenous level of total KIF3A protein.
Immunogen Type	Recombinant Protein
Immunogen Description	Recombinant protein of human KIF3A.
Target Name	KIF3A
Other Names	FLA10; KLP-20;
Accession No.	Swiss-Prot#: Q9Y496NCBI Gene ID: 11127
Uniprot	Q9Y496
GeneID	11127;
SDS-PAGE MW	80kd
Concentration	1.0mg/ml
Formulation	Supplied at 1.0mg/mL in phosphate buffered saline (without Mg ²⁺ and Ca ²⁺), pH 7.4, 150mM NaCl, 0.02% sodium azide and 50% glycerol.
Storage	Store at -20°C

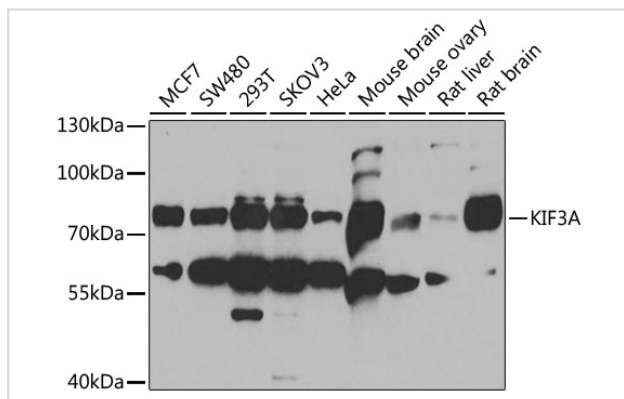
Application Details

WB □ 1:500 - 1:2000IF □ 1:50 - 1:200IP □ 1:50 - 1:100

Images



Immunofluorescence analysis of MCF7 cells using KIF3A .
Blue: DAPI for nuclear staining.



Western blot analysis of extracts of various cell lines, using KIF3A at 1:1000 dilution.

Background

Microtubule-based anterograde translocator for membranous organelles. Plus end-directed microtubule sliding activity in vitro. Plays a role in primary cilia formation (By similarity).

Note: This product is for in vitro research use only