

KLK4 antibody

Catalog No: #39065

Package Size: #39065-1 50ul #39065-2 100ul

Orders: order@signalwayantibody.comSupport: tech@signalwayantibody.com

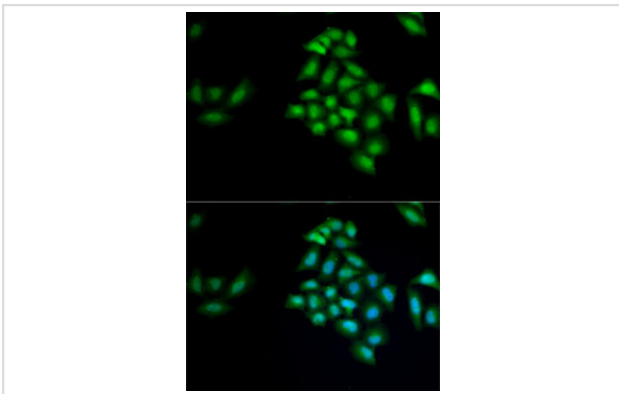
Description

Product Name	KLK4 antibody
Host Species	Rabbit
Clonality	Polyclonal
Purification	Antibodies were purified by affinity purification using immunogen.
Applications	WB,IF
Species Reactivity	Human,Mouse,Rat
Specificity	The antibody detects endogenous level of total KLK4 protein.
Immunogen Type	Recombinant Protein
Immunogen Description	Recombinant protein of human KLK4.
Target Name	KLK4
Other Names	ARM1; EMSP; PSTS; AI2A1; EMSP1; KLK-L1; PRSS17; kallikrein;
Accession No.	Swiss-Prot#: Q9Y5K2NCBI Gene ID: 9622
Uniprot	Q9Y5K2
GeneID	9622;
SDS-PAGE MW	27kd
Concentration	1.0mg/ml
Formulation	Supplied at 1.0mg/mL in phosphate buffered saline (without Mg ²⁺ and Ca ²⁺), pH 7.4, 150mM NaCl, 0.02% sodium azide and 50% glycerol.
Storage	Store at -20°C

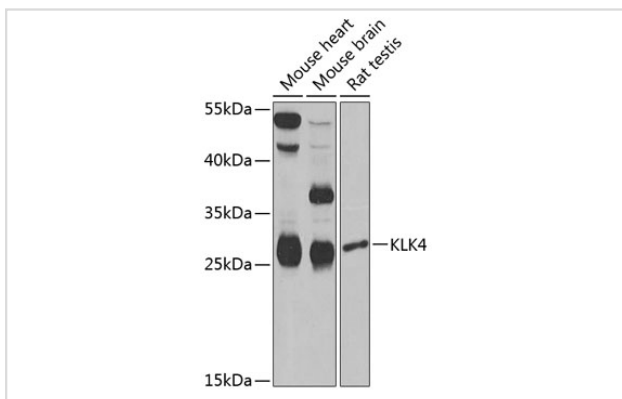
Application Details

WB □ 1:500 - 1:2000IF □ 1:50 - 1:100

Images



Immunofluorescence analysis of MCF7 cells using KLK4 .
Blue: DAPI for nuclear staining.



Western blot analysis of extracts of various cell lines, using KLK4 at 1:1000 dilution.

Background

Kallikreins are a subgroup of serine proteases having diverse physiological functions. Growing evidence suggests that many kallikreins are implicated in carcinogenesis and some have potential as novel cancer and other disease biomarkers. This gene is one of the fifteen kallikrein subfamily members located in a cluster on chromosome 19. In some tissues its expression is hormonally regulated. The expression pattern of a similar mouse protein in murine developing teeth supports a role for the protein in the degradation of enamel proteins. Alternate splice variants for this gene have been described, but their biological validity has not been determined.

Note: This product is for in vitro research use only