

ICAM2 antibody

Catalog No: #22396

Orders: order@signalwayantibody.com

Support: tech@signalwayantibody.com

Description

Product Name	ICAM2 antibody
Host Species	Rabbit
Clonality	Polyclonal
Purification	Purified by antigen-affinity chromatography.
Applications	WB IHC
Species Reactivity	Hu
Immunogen Type	Recombinant protein
Immunogen Description	Recombinant protein fragment contain a sequence corresponding to a region within amino acids 1 and 159 of Human ICAM2
Target Name	ICAM2
Accession No.	Swiss-Prot:P13598Gene ID:3384
Uniprot	P13598
GeneID	3384;
Concentration	1mg/ml
Formulation	Supplied in 0.1M Tris-buffered saline with 10% Glycerol (pH7.0). 0.01% Thimerosal was added as a preservative.
Storage	Store at -20°C for long term preservation (recommended). Store at 4°C for short term use.

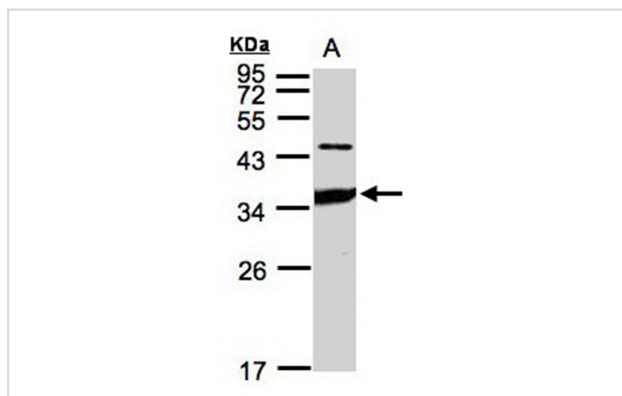
Application Details

Predicted MW: 31kd

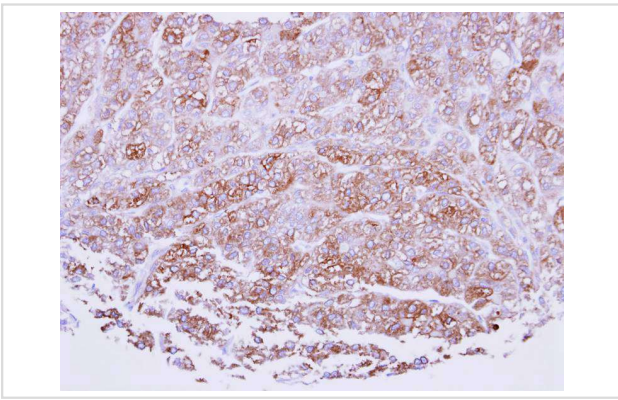
Western blotting: 1:500-1:3000

Immunohistochemistry: 1:100-1:250

Images



Sample(30 ug whole cell lysate)
A: HeLa S3
12% SDS PAGE
Primary antibody diluted at 1: 1000



Immunohistochemical analysis of paraffin-embedded breast cancer, using ICAM2 antibody at 1: 100 dilution.

Background

The protein encoded by this gene is a member of the intercellular adhesion molecule (ICAM) family. All ICAM proteins are type I transmembrane glycoproteins, contain 2-9 immunoglobulin-like C2-type domains, and bind to the leukocyte adhesion LFA-1 protein. This protein may play a role in lymphocyte recirculation by blocking LFA-1-dependent cell adhesion. It mediates adhesive interactions important for antigen-specific immune response, NK-cell mediated clearance, lymphocyte recirculation, and other cellular interactions important for immune response and surveillance. Several transcript variants encoding the same protein have been found for this gene. [provided by RefSeq]

Note: This product is for in vitro research use only