

MAPRE2 antibody

Catalog No: #39070

Package Size: #39070-1 50ul #39070-2 100ul

Orders: order@signalwayantibody.com

Support: tech@signalwayantibody.com

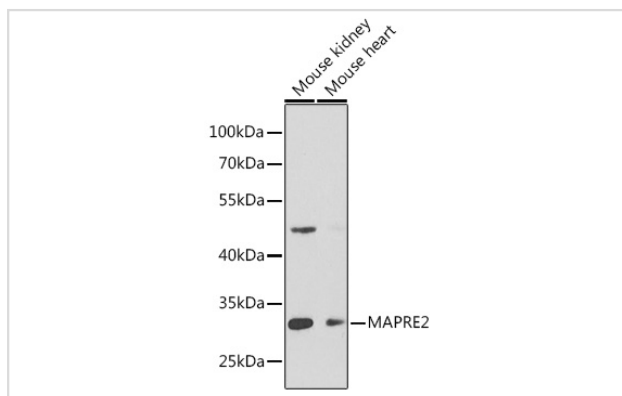
Description

Product Name	MAPRE2 antibody
Host Species	Rabbit
Clonality	Polyclonal
Isotype	IgG
Purification	Affinity purification
Applications	WB,IHC
Species Reactivity	Human,Mouse,Rat
Specificity	The antibody detects endogenous level of total MAPRE2 protein.
Immunogen Type	Recombinant Protein
Immunogen Description	Recombinant fusion protein of human MAPRE2 (NP_001137298.1).
Target Name	MAPRE2
Other Names	MAPRE2;CSCSC2;EB1;EB2;RP1
Accession No.	Uniprot:Q15555GeneID:10982
Uniprot	Q15555
GeneID	10982
SDS-PAGE MW	32KDa
Concentration	1.0mg/ml
Formulation	PBS with 0.02% sodium azide,50% glycerol,pH7.3.
Storage	Store at -20°C. Avoid freeze / thaw cycles.

Application Details

WB □ 1:500 - 1:2000 IHC □ 1:50 - 1:200

Images



Western blot analysis of extracts of various cell lines, using MAPRE2 antibody.

Background

The protein encoded by this gene shares significant homology to the adenomatous polyposis coli (APC) protein-binding EB1 gene family. This protein is a microtubule-associated protein that is necessary for spindle symmetry during mitosis. It is thought to play a role in the tumorigenesis of colorectal cancers and the proliferative control of normal cells. Alternative splicing of this gene results in multiple transcript variants.

Note: This product is for in vitro research use only