

## MAT1A antibody

Catalog No: #39071

Package Size: #39071-1 50ul #39071-2 100ul

Orders: order@signalwayantibody.com

Support: tech@signalwayantibody.com

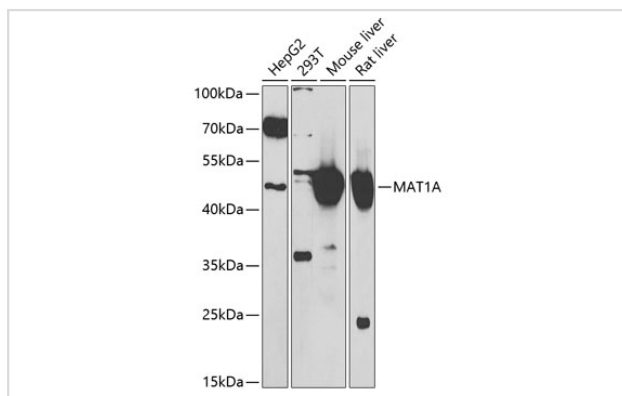
## Description

Product Name	MAT1A antibody
Host Species	Rabbit
Clonality	Polyclonal
Purification	Antibodies were purified by affinity purification using immunogen.
Applications	WB
Species Reactivity	Human,Mouse,Rat
Specificity	The antibody detects endogenous level of total MAT1A protein.
Immunogen Type	Recombinant Protein
Immunogen Description	Recombinant protein of human MAT1A.
Target Name	MAT1A
Other Names	MAT; SAMS; MATA1; SAMS1;
Accession No.	Swiss-Prot#: Q00266NCBI Gene ID: 4143
Uniprot	Q00266
GeneID	4143;
SDS-PAGE MW	43kd
Concentration	1.0mg/ml
Formulation	Supplied at 1.0mg/mL in phosphate buffered saline (without Mg <sup>2+</sup> and Ca <sup>2+</sup> ), pH 7.4, 150mM NaCl, 0.02% sodium azide and 50% glycerol.
Storage	Store at -20°C

## Application Details

WB □ 1:500 - 1:2000

## Images



Western blot analysis of extracts of various cell lines, using MAT1A at 1:1000 dilution.

## Background

---

This gene catalyzes a two-step reaction that involves the transfer of the adenosyl moiety of ATP to methionine to form S-adenosylmethionine and triphosphate, which is subsequently cleaved to PPI and Pi. S-adenosylmethionine is the source of methyl groups for most biological methylations. The encoded protein is found as a homotetramer (MAT I) or a homodimer (MAT III) whereas a third form, MAT II (gamma), is encoded by the MAT2A gene. Mutations in this gene are associated with methionine adenosyltransferase deficiency.

---

Note: This product is for in vitro research use only