

PANX1 antibody

Catalog No: #39097

Package Size: #39097-1 50ul #39097-2 100ul

Orders: order@signalwayantibody.com

Support: tech@signalwayantibody.com

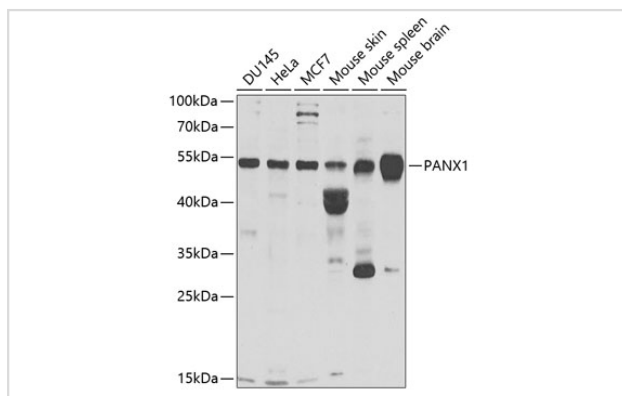
Description

Product Name	PANX1 antibody
Host Species	Rabbit
Clonality	Polyclonal
Purification	Antibodies were purified by affinity purification using immunogen.
Applications	WB
Species Reactivity	Human,Mouse
Specificity	The antibody detects endogenous level of total PANX1 protein.
Immunogen Type	Recombinant Protein
Immunogen Description	Recombinant protein of human PANX1.
Target Name	PANX1
Other Names	PX1; MRS1; UNQ2529;
Accession No.	Swiss-Prot#: Q96RD7NCBI Gene ID: 24145
Uniprot	Q96RD7
GeneID	24145;
SDS-PAGE MW	54kd
Concentration	1.0mg/ml
Formulation	Supplied at 1.0mg/mL in phosphate buffered saline (without Mg ²⁺ and Ca ²⁺), pH 7.4, 150mM NaCl, 0.02% sodium azide and 50% glycerol.
Storage	Store at -20°C

Application Details

WB □ 1:500 - 1:2000

Images



Western blot analysis of extracts of various cell lines, using PANX1 at 1:1000 dilution.

Background

The protein encoded by this gene belongs to the innexin family. Innexin family members are the structural components of gap junctions. This protein and pannexin 2 are abundantly expressed in central nerve system (CNS) and are coexpressed in various neuronal populations. Studies in *Xenopus* oocytes suggest that this protein alone and in combination with pannexin 2 may form cell type-specific gap junctions with distinct properties.

Note: This product is for in vitro research use only