

## QPCT antibody

Catalog No: #39122

Package Size: #39122-1 50ul #39122-2 100ul

Orders: [order@signalwayantibody.com](mailto:order@signalwayantibody.com)Support: [tech@signalwayantibody.com](mailto:tech@signalwayantibody.com)

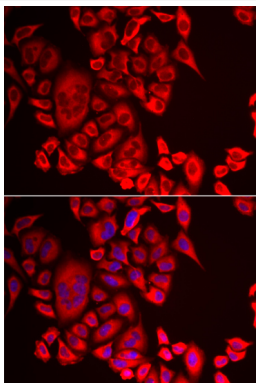
## Description

Product Name	QPCT antibody
Host Species	Rabbit
Clonality	Polyclonal
Purification	Antibodies were purified by affinity purification using immunogen.
Applications	WB,IF
Species Reactivity	Human,Mouse,Rat
Specificity	The antibody detects endogenous level of total QPCT protein.
Immunogen Type	Recombinant Protein
Immunogen Description	Recombinant protein of human QPCT.
Target Name	QPCT
Other Names	QC; GCT; sQC;
Accession No.	Swiss-Prot#: Q16769NCBI Gene ID: 25797
Uniprot	Q16769
GeneID	25797;
SDS-PAGE MW	40kd
Concentration	1.0mg/ml
Formulation	Supplied at 1.0mg/mL in phosphate buffered saline (without Mg <sup>2+</sup> and Ca <sup>2+</sup> ), pH 7.4, 150mM NaCl, 0.02% sodium azide and 50% glycerol.
Storage	Store at -20°C

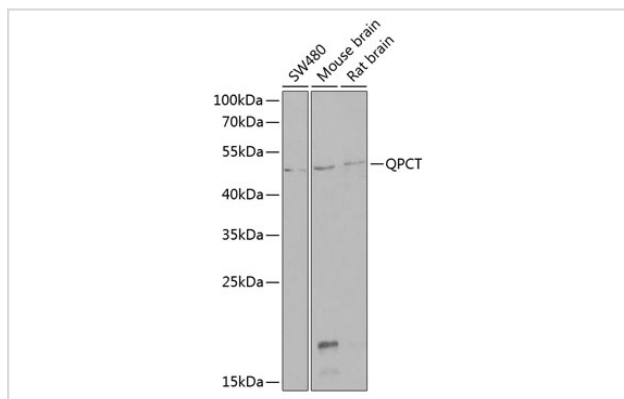
## Application Details

WB □ 1:500 - 1:2000IF □ 1:50 - 1:100

## Images



Immunofluorescence analysis of MCF-7 cells using QPCT .  
Blue: DAPI for nuclear staining.



Western blot analysis of extracts of various cell lines, using QPCT at 1:1000 dilution.

## Background

This gene encodes human pituitary glutamyl cyclase, which is responsible for the presence of pyroglutamyl residues in many neuroendocrine peptides. The amino acid sequence of this enzyme is 86% identical to that of bovine glutamyl cyclase.

Note: This product is for in vitro research use only