

## RALB antibody

Catalog No: #39125

Package Size: #39125-1 50ul #39125-2 100ul

Orders: order@signalwayantibody.com

Support: tech@signalwayantibody.com

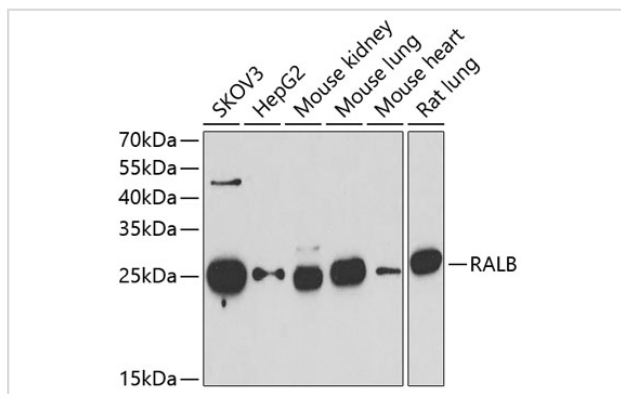
## Description

Product Name	RALB antibody
Host Species	Rabbit
Clonality	Polyclonal
Purification	Antibodies were purified by affinity purification using immunogen.
Applications	WB
Species Reactivity	Human,Mouse,Rat
Specificity	The antibody detects endogenous level of total RALB protein.
Immunogen Type	Recombinant Protein
Immunogen Description	Recombinant protein of human RALB.
Target Name	RALB
Accession No.	Swiss-Prot#: P11234NCBI Gene ID: 5899
Uniprot	P11234
GeneID	5899;
SDS-PAGE MW	23kd
Concentration	1.0mg/ml
Formulation	Supplied at 1.0mg/mL in phosphate buffered saline (without Mg <sup>2+</sup> and Ca <sup>2+</sup> ), pH 7.4, 150mM NaCl, 0.02% sodium azide and 50% glycerol.
Storage	Store at -20°C

## Application Details

WB □ 1:500 - 1:2000

## Images



Western blot analysis of extracts of various cell lines, using RALB at 1:1000 dilution.

## Background

This gene encodes a GTP-binding protein that belongs to the small GTPase superfamily and Ras family of proteins. GTP-binding proteins mediate the

transmembrane signaling initiated by the occupancy of certain cell surface receptors.

---

Note: This product is for in vitro research use only