

SARS antibody

Catalog No: #39139

Package Size: #39139-1 50ul #39139-2 100ul

Orders: order@signalwayantibody.com

Support: tech@signalwayantibody.com

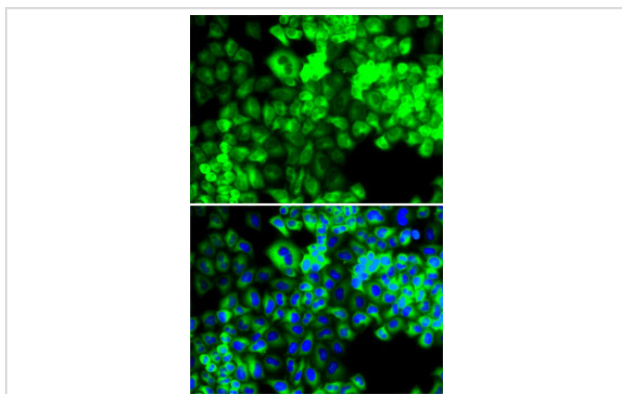
Description

Product Name	SARS antibody
Host Species	Rabbit
Clonality	Polyclonal
Purification	Antibodies were purified by affinity purification using immunogen.
Applications	WB,IHC,IF
Species Reactivity	Human,Mouse,Rat
Specificity	The antibody detects endogenous level of total SARS protein.
Immunogen Type	Recombinant Protein
Immunogen Description	Recombinant protein of human SARS.
Target Name	SARS
Other Names	SERS; SERRS;
Accession No.	Swiss-Prot#: P49591NCBI Gene ID: 6301
Uniprot	P49591
GeneID	6301;
SDS-PAGE MW	58kd
Concentration	1.0mg/ml
Formulation	Supplied at 1.0mg/mL in phosphate buffered saline (without Mg ²⁺ and Ca ²⁺), pH 7.4, 150mM NaCl, 0.02% sodium azide and 50% glycerol.
Storage	Store at -20°C

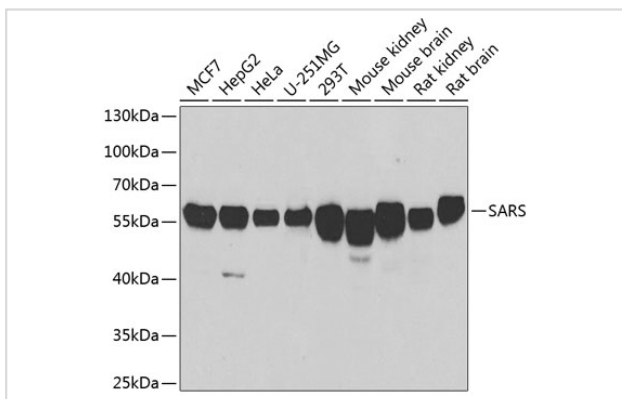
Application Details

WB □ 1:500 - 1:2000 IHC □ 1:50 - 1:200 IF □ 1:50 - 1:200

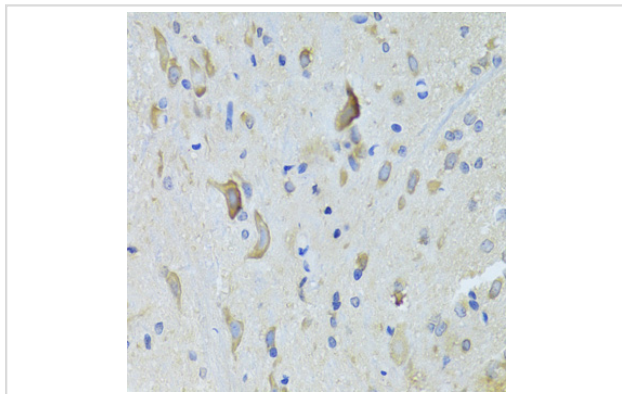
Images



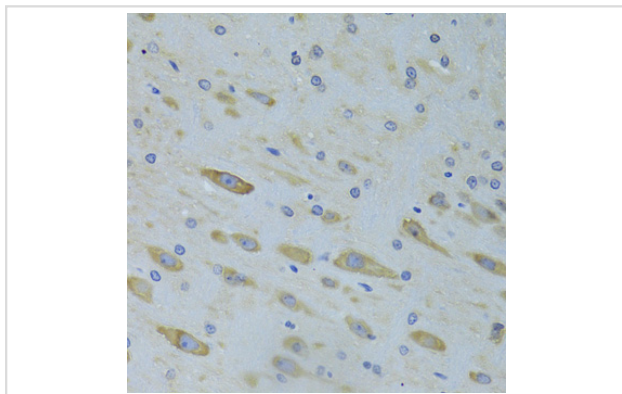
Immunofluorescence analysis of MCF7 cells using SARS .
Blue: DAPI for nuclear staining.



Western blot analysis of extracts of various cell lines, using SARS at 1:1000 dilution.



Immunohistochemistry of paraffin-embedded rat spinal cord using SARS at dilution of 1:100 (40x lens).



Immunohistochemistry of paraffin-embedded rat brain using SARS at dilution of 1:100 (40x lens).

Background

This gene belongs to the class II amino-acyl tRNA family. The encoded enzyme catalyzes the transfer of L-serine to tRNA (Ser) and is related to bacterial and yeast counterparts. Multiple alternatively spliced transcript variants have been described but the biological validity of all variants is unknown.

Note: This product is for in vitro research use only