

SCYL1 antibody

Catalog No: #39140

Package Size: #39140-1 50ul #39140-2 100ul

Orders: order@signalwayantibody.com

Support: tech@signalwayantibody.com

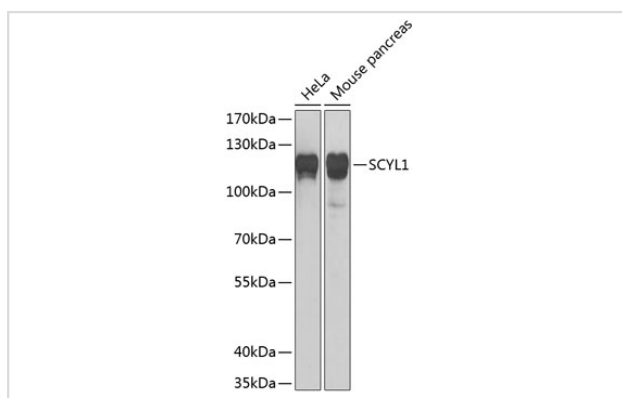
Description

Product Name	SCYL1 antibody
Host Species	Rabbit
Clonality	Polyclonal
Isotype	IgG
Purification	Affinity purification
Applications	WB
Species Reactivity	Human,Mouse,Rat
Specificity	The antibody detects endogenous level of total SCYL1 protein.
Immunogen Type	Recombinant Protein
Immunogen Description	Recombinant fusion protein of human SCYL1 (NP_065731.3).
Target Name	SCYL1
Other Names	SCYL1;GKLP;HT019;NKT1;NKT1;P105;SCAR21;TAPK;TEIF;TRAP
Accession No.	Uniprot:Q96KG9GeneID:57410
Uniprot	Q96KG9
GeneID	57410
SDS-PAGE MW	110kDa
Concentration	1.0mg/ml
Formulation	PBS with 0.02% sodium azide,50% glycerol,pH7.3.
Storage	Store at -20°C. Avoid freeze / thaw cycles.

Application Details

WB □ 1:500 - 1:2000

Images



Western blot analysis of extracts of various cell lines, using SCYL1 Antibody.

Background

This gene encodes a transcriptional regulator belonging to the SCY1-like family of kinase-like proteins. The protein has a divergent N-terminal kinase domain that is thought to be catalytically inactive, and can bind specific DNA sequences through its C-terminal domain. It activates transcription of the telomerase reverse transcriptase and DNA polymerase beta genes. The protein has been localized to the nucleus, and also to the cytoplasm and centrosomes during mitosis. Multiple transcript variants encoding different isoforms have been found for this gene.

Note: This product is for in vitro research use only