

SETMAR antibody

Catalog No: #39143

Package Size: #39143-1 50ul #39143-2 100ul

Orders: order@signalwayantibody.comSupport: tech@signalwayantibody.com

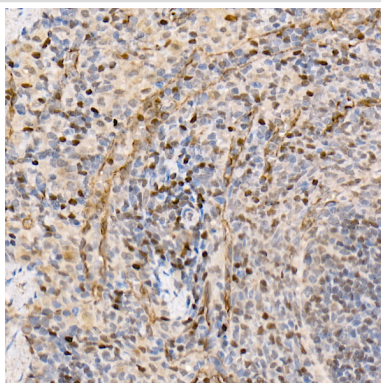
Description

Product Name	SETMAR antibody
Host Species	Rabbit
Clonality	Polyclonal
Isotype	IgG
Purification	Affinity purification
Applications	IHC
Species Reactivity	Human
Specificity	The antibody detects endogenous level of total SETMAR protein.
Immunogen Type	Recombinant Protein
Immunogen Description	Recombinant fusion protein of human SETMAR (NP_006506.3).
Target Name	SETMAR
Other Names	SETMAR;METNASE;Mar1
Accession No.	Uniprot:Q53H47GeneID:6419
Uniprot	Q53H47
GeneID	6419
SDS-PAGE MW	Refer to Figures
Concentration	1.0mg/ml
Formulation	PBS with 0.02% sodium azide,50% glycerol,pH7.3.
Storage	Store at -20°C. Avoid freeze / thaw cycles.

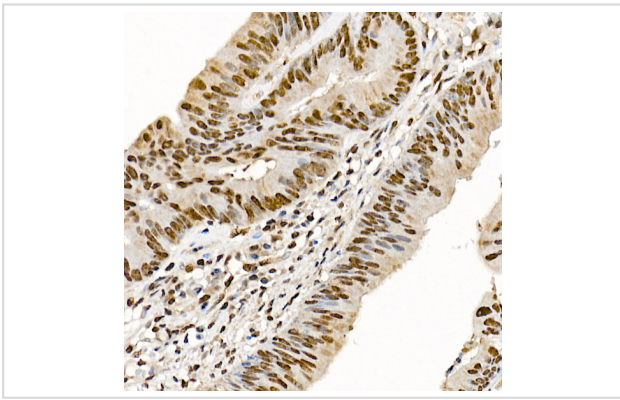
Application Details

IHC □ 1:50 - 1:200

Images



Immunohistochemistry of paraffin-embedded rat spleen using SETMAR Rabbit pAb.



Immunohistochemistry of paraffin-embedded human colon carcinoma using SETMAR Rabbit pAb.

Background

This gene encodes a fusion protein that contains an N-terminal histone-lysine N-methyltransferase domain and a C-terminal mariner transposase domain. The encoded protein binds DNA and functions in DNA repair activities including non-homologous end joining and double strand break repair. The SET domain portion of this protein specifically methylates histone H3 lysines 4 and 36. This gene exists as a fusion gene only in anthropoid primates, other organisms lack mariner transposase domain. Alternate splicing results in multiple transcript variants.

Note: This product is for in vitro research use only