

SLC23A2 antibody

Catalog No: #39145

Package Size: #39145-1 50ul #39145-2 100ul

Orders: order@signalwayantibody.com

Support: tech@signalwayantibody.com

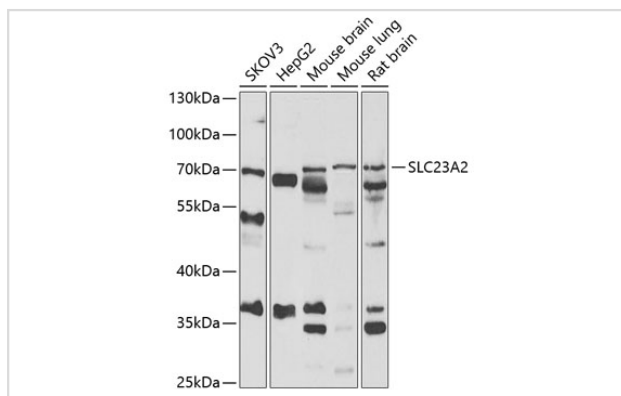
Description

Product Name	SLC23A2 antibody
Host Species	Rabbit
Clonality	Polyclonal
Isotype	IgG
Purification	Affinity purification
Applications	WB,IHC
Species Reactivity	Human,Mouse,Rat
Specificity	The antibody detects endogenous level of total SLC23A2 protein.
Immunogen Type	Recombinant Protein
Immunogen Description	Recombinant fusion protein of human SLC23A2 (NP_976072.1).
Target Name	SLC23A2
Other Names	SLC23A2;NBTL1;SLC23A1;SVCT2;YSPL2;hSVCT2
Accession No.	Uniprot:Q9UGH3GenelD:9962
Uniprot	Q9UGH3
GenelD	9962
SDS-PAGE MW	70kDa
Concentration	1.0mg/ml
Formulation	PBS with 0.02% sodium azide,50% glycerol,pH7.3.
Storage	Store at -20°C. Avoid freeze / thaw cycles.

Application Details

WB □ 1:500 - 1:2000 IHC □ 1:50 - 1:200

Images



Western blot analysis of extracts of various cell lines, using SLC23A2 antibody.

Background

The absorption of vitamin C into the body and its distribution to organs requires two sodium-dependent vitamin C transporters. This gene encodes one of the two required transporters and the encoded protein accounts for tissue-specific uptake of vitamin C. Previously, this gene had an official symbol of SLC23A1.

Note: This product is for in vitro research use only