

SMPD1 antibody

Catalog No: #39147

Package Size: #39147-1 50ul #39147-2 100ul

Orders: order@signalwayantibody.com

Support: tech@signalwayantibody.com

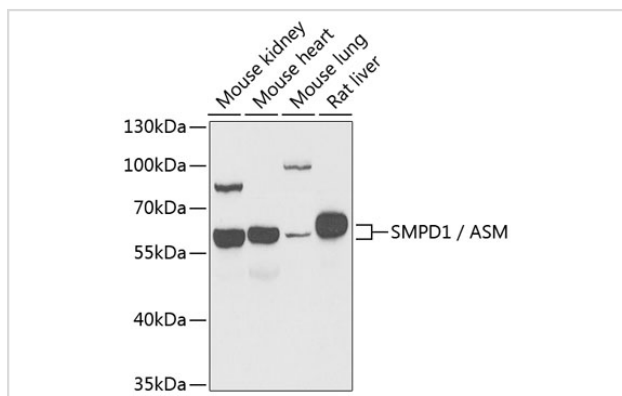
Description

Product Name	SMPD1 antibody
Host Species	Rabbit
Clonality	Polyclonal
Isotype	IgG
Purification	Affinity purification
Applications	WB,IF
Species Reactivity	Human,Mouse,Rat
Specificity	The antibody detects endogenous level of total SMPD1 protein.
Immunogen Type	Recombinant Protein
Immunogen Description	Recombinant fusion protein of human SMPD1 / ASM (NP_000534.3).
Target Name	SMPD1
Other Names	SMPD1;ASM;ASMASE;NPD;SMPD1/ASM
Accession No.	Uniprot:P17405GeneID:6609
Uniprot	P17405
GeneID	6609
SDS-PAGE MW	60kDa
Concentration	1.0mg/ml
Formulation	PBS with 0.02% sodium azide,50% glycerol,pH7.3.
Storage	Store at -20°C. Avoid freeze / thaw cycles.

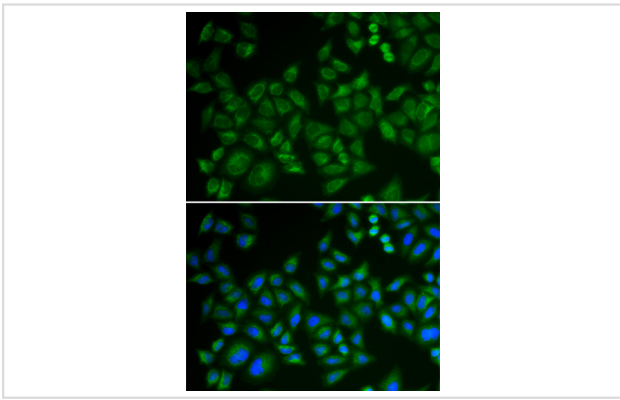
Application Details

WB □ 1:500 - 1:2000 IF □ 1:10 - 1:100

Images



Western blot analysis of extracts of various cell lines, using SMPD1 / ASM antibody.



Immunofluorescence analysis of HeLa cells using SMPD1 / ASM antibody.

Background

The protein encoded by this gene is a lysosomal acid sphingomyelinase that converts sphingomyelin to ceramide. The encoded protein also has phospholipase C activity. Defects in this gene are a cause of Niemann-Pick disease type A (NPA) and Niemann-Pick disease type B (NPB). Multiple transcript variants encoding different isoforms have been identified.

Note: This product is for in vitro research use only