

SMPX antibody

Catalog No: #39148

Package Size: #39148-1 50ul #39148-2 100ul

Orders: order@signalwayantibody.com

Support: tech@signalwayantibody.com

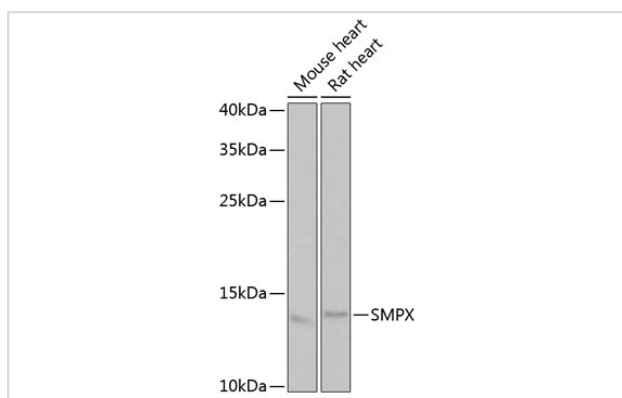
Description

Product Name	SMPX antibody
Host Species	Rabbit
Clonality	Polyclonal
Isotype	IgG
Purification	Affinity purification
Applications	WB
Species Reactivity	Human,Mouse,Rat
Specificity	The antibody detects endogenous level of total SMPX protein.
Immunogen Type	Recombinant Protein
Immunogen Description	Recombinant fusion protein of human SMPX (NP_055147.1).
Target Name	SMPX
Other Names	SMPX;DFN6;DFNX4
Accession No.	Uniprot:Q9UHP9GeneID:23676
Uniprot	Q9UHP9
GeneID	23676
SDS-PAGE MW	13kDa
Concentration	1.0mg/ml
Formulation	PBS with 0.02% sodium azide,50% glycerol,pH7.3.
Storage	Store at -20°C. Avoid freeze / thaw cycles.

Application Details

WB □ 1:500 - 1:2000

Images



Western blot analysis of extracts of various cell lines, using SMPX antibody.

Background

This gene encodes a small protein that has no known functional domains. Mutations in this gene are a cause of X-linked deafness-4, and the encoded protein may play a role in the maintenance of inner ear cells subjected to mechanical stress. Alternatively spliced transcript variants have been observed for this gene.

Note: This product is for in vitro research use only