

## SPINT2 antibody

Catalog No: #39150

Package Size: #39150-1 50ul #39150-2 100ul

Orders: [order@signalwayantibody.com](mailto:order@signalwayantibody.com)Support: [tech@signalwayantibody.com](mailto:tech@signalwayantibody.com)

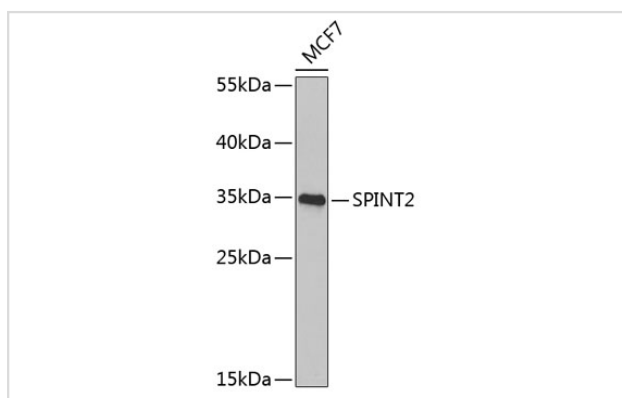
## Description

Product Name	SPINT2 antibody
Host Species	Rabbit
Clonality	Polyclonal
Isotype	IgG
Purification	Affinity purification
Applications	WB,IF
Species Reactivity	Human
Specificity	The antibody detects endogenous level of total SPINT2 protein.
Immunogen Type	Recombinant Protein
Immunogen Description	Recombinant fusion protein of human SPINT2 (NP_066925.1).
Target Name	SPINT2
Other Names	SPINT2;DIAR3;HAI-2;HAI2;Kop;PB
Accession No.	Uniprot:O43291GeneID:10653
Uniprot	O43291
GeneID	10653
SDS-PAGE MW	34kDa
Concentration	1.0mg/ml
Formulation	PBS with 0.02% sodium azide,50% glycerol,pH7.3.
Storage	Store at -20°C. Avoid freeze / thaw cycles.

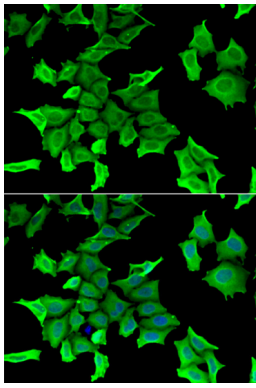
## Application Details

WB □ 1:500 - 1:2000 IF □ 1:50 - 1:100

## Images



Western blot analysis of extracts of MCF-7 cells, using SPINT2 Antibody.



Immunofluorescence analysis of HeLa cells using SPINT2 antibody.

## Background

This gene encodes a transmembrane protein with two extracellular Kunitz domains that inhibits a variety of serine proteases. The protein inhibits HGF activator which prevents the formation of active hepatocyte growth factor. This gene is a putative tumor suppressor, and mutations in this gene result in congenital sodium diarrhea. Multiple transcript variants encoding different isoforms have been found for this gene.

Note: This product is for in vitro research use only