

SUFU antibody

Catalog No: #39155

Package Size: #39155-1 50ul #39155-2 100ul

Orders: order@signalwayantibody.comSupport: tech@signalwayantibody.com

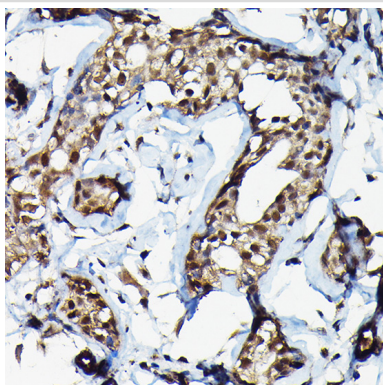
Description

Product Name	SUFU antibody
Host Species	Rabbit
Clonality	Polyclonal
Isotype	IgG
Purification	Affinity purification
Applications	WB,IHC,IF
Species Reactivity	Human,Mouse,Rat
Specificity	The antibody detects endogenous level of total SUFU protein.
Immunogen Type	Recombinant Protein
Immunogen Description	Recombinant fusion protein of human SUFU (NP_057253.2).
Target Name	SUFU
Other Names	SUFU;PRO1280;SUFUH;SUFUXL
Accession No.	Uniprot:Q9UMX1 GeneID:51684
Uniprot	Q9UMX1
GeneID	51684
SDS-PAGE MW	54kDa
Concentration	1.0mg/ml
Formulation	PBS with 0.02% sodium azide,50% glycerol,pH7.3.
Storage	Store at -20°C. Avoid freeze / thaw cycles.

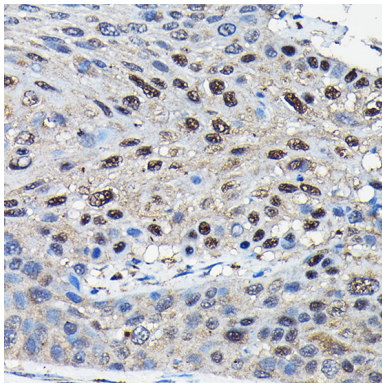
Application Details

WB 1:500 - 1:2000 IHC 1:50 - 1:200 IF 1:50 - 1:200

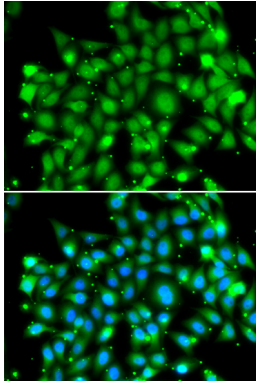
Images



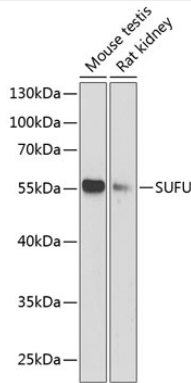
Immunohistochemistry of paraffin-embedded human breast cancer using SUFU Rabbit pAb.



Immunohistochemistry of paraffin-embedded human esophageal cancer using SUFU Rabbit pAb.



Immunofluorescence analysis of MCF-7 cells using SUFU antibody.



Western blot analysis of extracts of various cell lines, using SUFU antibody.

Background

The Hedgehog signaling pathway plays an important role in early human development. The pathway is a signaling cascade that plays a role in pattern formation and cellular proliferation during development. This gene encodes a negative regulator of the hedgehog signaling pathway. Defects in this gene are a cause of medulloblastoma. Alternative splicing results in multiple transcript variants.

Note: This product is for in vitro research use only