

## Carboxypeptidase M antibody

Catalog No: #22407

Orders: order@signalwayantibody.com

Support: tech@signalwayantibody.com

## Description

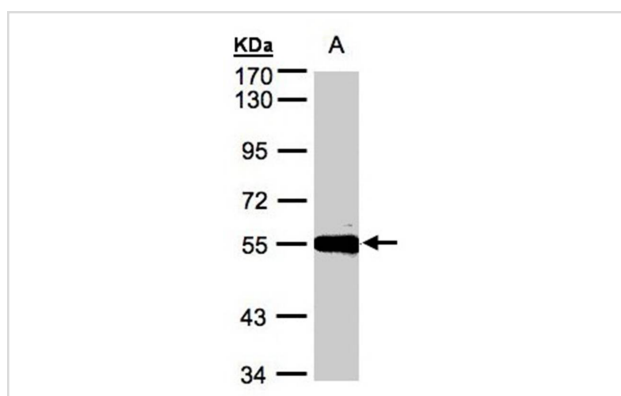
Product Name	Carboxypeptidase M antibody
Host Species	Rabbit
Clonality	Polyclonal
Purification	Purified by antigen-affinity chromatography.
Applications	WB
Species Reactivity	Hu
Immunogen Type	Recombinant protein
Immunogen Description	Recombinant protein fragment contain a sequence corresponding to a region within amino acids 43 and 273 of Human CPM
Target Name	Carboxypeptidase M
Accession No.	Swiss-Prot:P14384Gene ID:1368
Uniprot	P14384
GeneID	1368;
Concentration	1mg/ml
Formulation	Supplied in 0.1M Tris-buffered saline with 10% Glycerol (pH7.0). 0.01% Thimerosal was added as a preservative.
Storage	Store at -20°C for long term preservation (recommended). Store at 4°C for short term use.

## Application Details

Predicted MW: 51kd

Western blotting: 1:500-1:3000

## Images



Sample(30 ug whole cell lysate)  
 A: Hep G2  
 7.5% SDS PAGE  
 Primary antibody diluted at 1: 500

## Background

The protein encoded by this gene is a membrane-bound arginine/lysine carboxypeptidase. Its expression is associated with monocyte to macrophage differentiation. This encoded protein contains hydrophobic regions at the amino and carboxy termini and has 6 potential asparagine-linked

glycosylation sites. The active site residues of carboxypeptidases A and B are conserved in this protein. Three alternatively spliced transcript variants encoding the same protein have been described for this gene. [provided by RefSeq]

---

Note: This product is for in vitro research use only