

PLA2G2D antibody

Catalog No: #39187

Package Size: #39187-1 50ul #39187-2 100ul

Orders: order@signalwayantibody.comSupport: tech@signalwayantibody.com

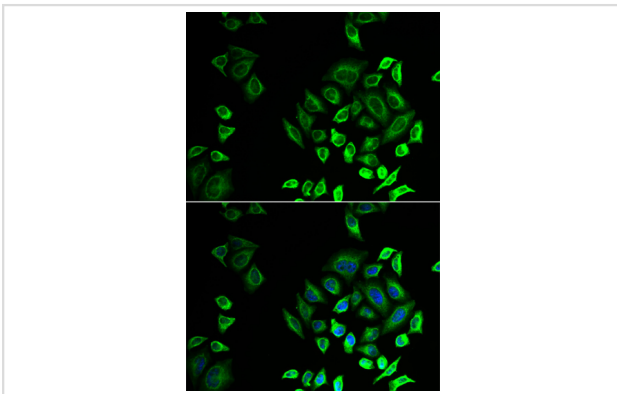
Description

Product Name	PLA2G2D antibody
Host Species	Rabbit
Clonality	Polyclonal
Purification	Antibodies were purified by affinity purification using immunogen.
Applications	WB,IHC,IF
Species Reactivity	Human,Rat
Specificity	The antibody detects endogenous level of total PLA2G2D protein.
Immunogen Type	Recombinant Protein
Immunogen Description	Recombinant protein of human PLA2G2D.
Target Name	PLA2G2D
Other Names	SPLASH; sPLA2S; PLA2IID; sPLA2-IID;
Accession No.	Swiss-Prot#: Q9UNK4NCBI Gene ID: 26279
Uniprot	Q9UNK4
GeneID	26279;
SDS-PAGE MW	16kd
Concentration	1.0mg/ml
Formulation	Supplied at 1.0mg/mL in phosphate buffered saline (without Mg ²⁺ and Ca ²⁺), pH 7.4, 150mM NaCl, 0.02% sodium azide and 50% glycerol.
Storage	Store at -20°C

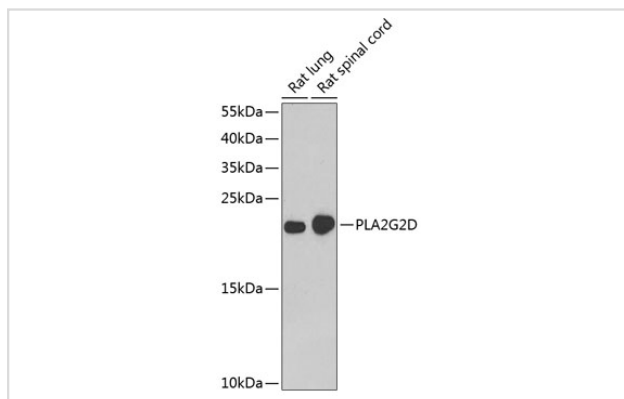
Application Details

WB □ 1:500 - 1:2000 IHC □ 1:50 - 1:200 IF □ 1:10 - 1:100

Images



Immunofluorescence analysis of U2OS cells using PLA2G2D .
Blue: DAPI for nuclear staining.



Western blot analysis of extracts of various cell lines, using PLA2G2D at 1:1000 dilution.

Background

This gene encodes a secreted member of the phospholipase A2 family, and is found in a cluster of related family members on chromosome 1. Phospholipase A2 family members hydrolyze the sn-2 fatty acid ester bond of glycerophospholipids to produce lysophospholipids and free fatty acid. This gene may be involved in inflammation and immune response, and in weight loss associated with chronic obstructive pulmonary disease. Alternative splicing results in multiple transcript variants encoding different isoforms.

Note: This product is for in vitro research use only