

## SETD6 antibody

Catalog No: #39189

Package Size: #39189-1 50ul #39189-2 100ul

Orders: order@signalwayantibody.com

Support: tech@signalwayantibody.com

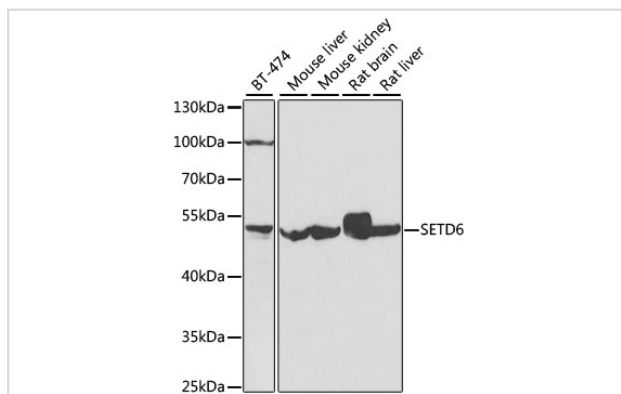
## Description

Product Name	SETD6 antibody
Host Species	Rabbit
Clonality	Polyclonal
Purification	Antibodies were purified by affinity purification using immunogen.
Applications	WB
Species Reactivity	Human,Mouse,Rat
Specificity	The antibody detects endogenous level of total SETD6 protein.
Immunogen Type	Recombinant Protein
Immunogen Description	Recombinant protein of human SETD6.
Target Name	SETD6
Accession No.	Swiss-Prot#: Q8TBK2NCBI Gene ID: 79918
Uniprot	Q8TBK2
GeneID	79918;
SDS-PAGE MW	51,53kd
Concentration	1.0mg/ml
Formulation	Supplied at 1.0mg/mL in phosphate buffered saline (without Mg <sup>2+</sup> and Ca <sup>2+</sup> ), pH 7.4, 150mM NaCl, 0.02% sodium azide and 50% glycerol.
Storage	Store at -20°C

## Application Details

WB □ 1:500 - 1:2000

## Images



Western blot analysis of extracts of various cell lines, using SETD6 at 1:1000 dilution.

## Background

Protein-lysine N-methyltransferase that specifically monomethylates 'Lys-310' of the RELA subunit of NF-kappa-B complex, leading to down-regulate

NF-kappa-B transcription factor activity.

---

Note: This product is for in vitro research use only