

ACTA2 antibody

Catalog No: #39192

Package Size: #39192-1 50ul #39192-2 100ul

Orders: order@signalwayantibody.com

Support: tech@signalwayantibody.com

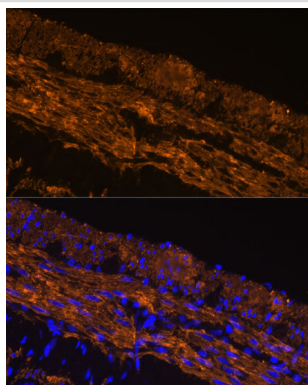
Description

Product Name	ACTA2 antibody
Host Species	Rabbit
Clonality	Polyclonal
Purification	Antibodies were purified by affinity purification using immunogen.
Applications	WB,IHC,IF
Species Reactivity	Human,Mouse,Rat
Specificity	The antibody detects endogenous level of total ACTA2 protein.
Immunogen Type	Recombinant Protein
Immunogen Description	Recombinant protein of human ACTA2.
Target Name	ACTA2
Other Names	AAT6; ACTSA; MYMY5;
Accession No.	Swiss-Prot#: P62736NCBI Gene ID: 59
Uniprot	P62736
GeneID	59;
SDS-PAGE MW	42kd
Concentration	1.0mg/ml
Formulation	Supplied at 1.0mg/mL in phosphate buffered saline (without Mg ²⁺ and Ca ²⁺), pH 7.4, 150mM NaCl, 0.02% sodium azide and 50% glycerol.
Storage	Store at -20°C

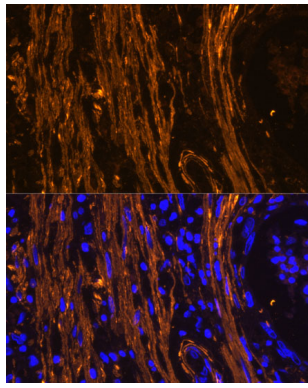
Application Details

WB 1:500 - 1:1000 IHC 1:50 - 1:100 IF 1:100 - 1:200

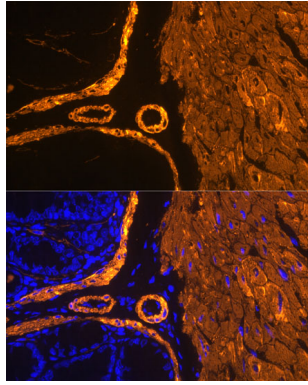
Images



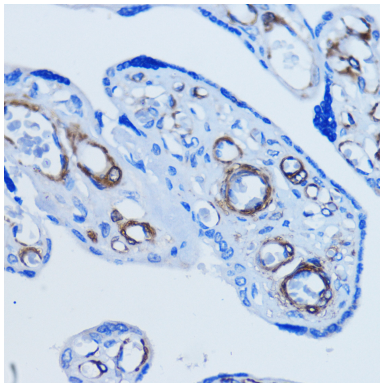
Immunofluorescence analysis of rat Intestine using alpha smooth muscle actin Polyclonal at dilution of 1:100 (40x lens). Blue: DAPI for nuclear staining.



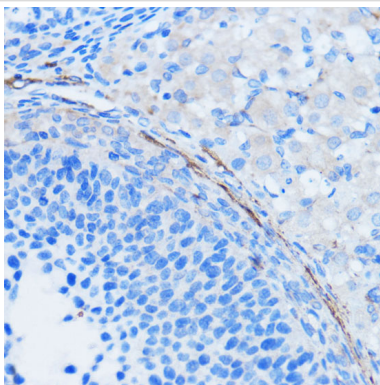
Immunofluorescence analysis of human colon carcinoma using alpha smooth muscle actin Polyclonal at dilution of 1:100 (40x lens). Blue: DAPI for nuclear staining.



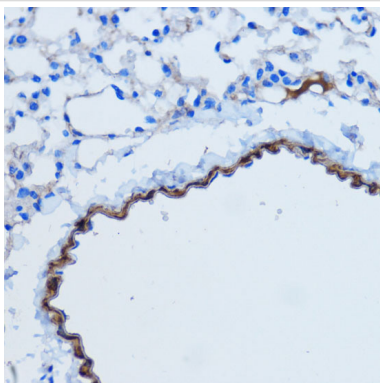
Immunofluorescence analysis of mouse Intestine using alpha smooth muscle actin Polyclonal at dilution of 1:100 (20x lens). Blue: DAPI for nuclear staining.



Immunohistochemistry of paraffin-embedded human placenta using alpha smooth muscle actin at dilution of 1:100 (40x lens).

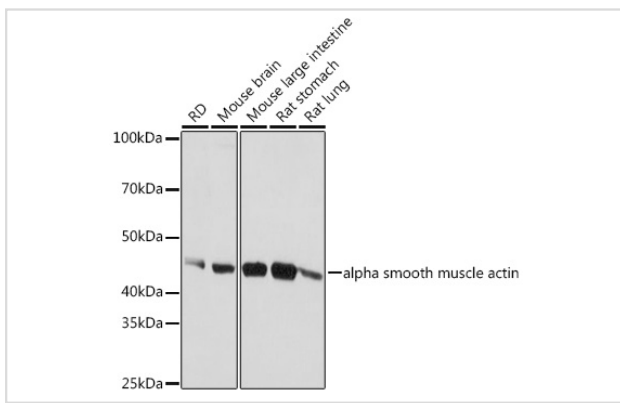


Immunohistochemistry of paraffin-embedded rat ovary using alpha smooth muscle actin at dilution of 1:100 (40x lens).



Immunohistochemistry of paraffin-embedded mouse lung using alpha smooth muscle actin at dilution of 1:100 (40x lens).

Western blot analysis of extracts of various cell lines, using alpha smooth muscle actin at 1:500 dilution.



Background

The protein encoded by this gene belongs to the actin family of proteins, which are highly conserved proteins that play a role in cell motility, structure and integrity. Alpha, beta and gamma actin isoforms have been identified, with alpha actins being a major constituent of the contractile apparatus, while beta and gamma actins are involved in the regulation of cell motility. This actin is an alpha actin that is found in skeletal muscle. Defects in this gene cause aortic aneurysm familial thoracic type 6. Multiple alternatively spliced variants, encoding the same protein, have been identified.

Note: This product is for in vitro research use only