

CD40 antibody

Catalog No: #39204

Package Size: #39204-1 50ul #39204-2 100ul

Orders: order@signalwayantibody.com

Support: tech@signalwayantibody.com

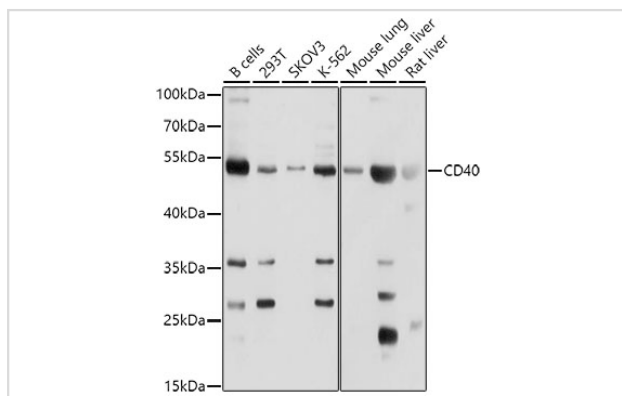
Description

Product Name	CD40 antibody
Host Species	Rabbit
Clonality	Polyclonal
Purification	Antibodies were purified by affinity purification using immunogen.
Applications	WB,IHC,IF
Species Reactivity	Human,Mouse,Rat
Specificity	The antibody detects endogenous level of total CD40 protein.
Immunogen Type	Peptide
Immunogen Description	C term -peptide of human CD40.
Target Name	CD40
Other Names	CD40;Bp50;CDW40;MGC9013;TNFRSF5;p50;
Accession No.	Swiss-Prot#: P25942NCBI Gene ID: 958
Uniprot	P25942
GeneID	958;
SDS-PAGE MW	31kd
Concentration	1.0mg/ml
Formulation	Supplied at 1.0mg/mL in phosphate buffered saline (without Mg ²⁺ and Ca ²⁺), pH 7.4, 150mM NaCl, 0.02% sodium azide and 50% glycerol.
Storage	Store at -20°C

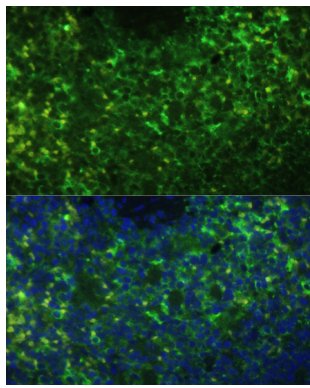
Application Details

WB □ 1:500 - 1:2000 IHC □ 1:50 - 1:200 IF □ 1:50 - 1:200

Images



Western blot analysis of extracts of various cell lines, using CD40 at 1:1000 dilution.



Immunofluorescence analysis of mouse spleen using CD40 at dilution of 1:100 (40x lens). Blue: DAPI for nuclear staining.

Background

CD40 Ligand (CD40L), a member of the TNF superfamily of ligands, is expressed as either a membrane-bound or soluble homotrimer (1). Both membrane-bound and soluble forms of CD40L have biological activity (1,2). CD40L is expressed primarily on activated T cells; however, mast cells, basophils, and NK cells may also express CD40L (1). CD40L functions as an important T cell co-stimulatory molecule and enhances T-dependent B cell responses (1,2). CD40L binds CD40, which is a receptor expressed on B cells, dendritic cells, and macrophages (1). Binding of CD40L to CD40 leads to the recruitment of TRAF proteins (TRAFs 2,3,5, and 6) resulting in the activation of the JNK and NF- κ B pathways (1,2).

Note: This product is for in vitro research use only