

## CD1B antibody

Catalog No: #22413

Orders: order@signalwayantibody.com

Support: tech@signalwayantibody.com

## Description

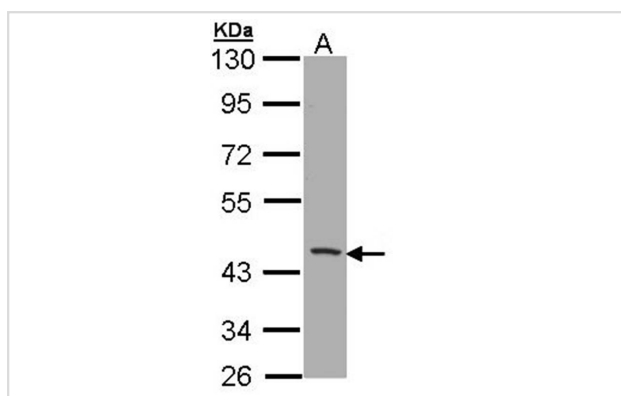
Product Name	CD1B antibody
Host Species	Rabbit
Clonality	Polyclonal
Purification	Purified by antigen-affinity chromatography.
Applications	WB
Species Reactivity	Hu
Immunogen Type	Recombinant protein
Immunogen Description	Recombinant protein fragment contain a sequence corresponding to a region within amino acids 61 and 258 of Human CD1B
Target Name	CD1B
Accession No.	Swiss-Prot:P29016Gene ID:910
Uniprot	P29016
GeneID	910;
Concentration	1mg/ml
Formulation	Supplied in 0.1M Tris-buffered saline with 10% Glycerol (pH7.0). 0.01% Thimerosal was added as a preservative.
Storage	Store at -20°C for long term preservation (recommended). Store at 4°C for short term use.

## Application Details

Predicted MW: 37kd

Western blotting: 1:500-1:3000

## Images



Sample (30 ug of whole cell lysate)  
 A: H1299  
 10% SDS PAGE  
 Primary antibody diluted at 1: 1000

## Background

This gene encodes a member of the CD1 family of transmembrane glycoproteins, which are structurally related to the major histocompatibility complex (MHC) proteins and form heterodimers with beta-2-microglobulin. The CD1 proteins mediate the presentation of primarily lipid and glycolipid antigens

of self or microbial origin to T cells. The human genome contains five CD1 family genes organized in a cluster on chromosome 1. The CD1 family members are thought to differ in their cellular localization and specificity for particular lipid ligands. The protein encoded by this gene localizes to late endosomes and lysosomes via a tyrosine-based motif in the cytoplasmic tail, and requires vesicular acidification to bind lipid antigens. [provided by RefSeq]

---

Note: This product is for in vitro research use only