

AMPK gamma 1 Antibody

Catalog No: #39217

Orders: order@signalwayantibody.comSupport: tech@signalwayantibody.com

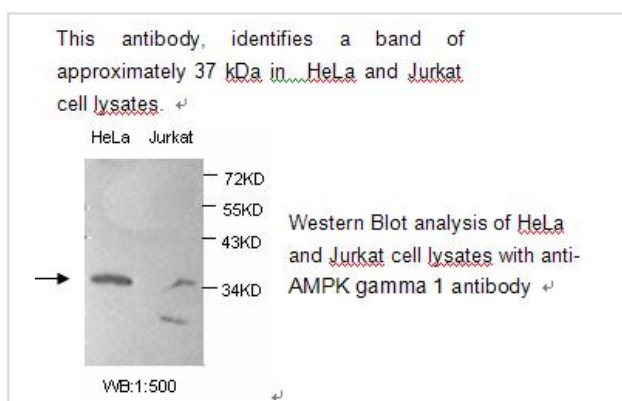
Description

Product Name	AMPK gamma 1 Antibody
Host Species	Rabbit
Clonality	Polyclonal
Purification	Protein A purified
Applications	ELISA WB
Species Reactivity	Hu Ms Rt
Specificity	AMPK gamma 1 antibody detects endogenous levels of AMPK gamma 1 protein. Not tested with other proteins
Immunogen Type	Peptide-KLH
Immunogen Description	Synthetic peptide conjugated to KLH
Target Name	AMPK gamma 1
Concentration	1.0mg/ml
Formulation	PBS, pH 7.4 with 0.02% Sodium Azide
Storage	This product is stable for several weeks at 4°C as an undiluted liquid. Dilute only prior to immediate use. For extended storage, aliquot contents and freeze at -20°C or below. Avoid cycles of freezing and thawing. Expiration date is one (1) year from date of receipt.

Application Details

ELISA WB: 1:500

Images



Note: This product is for in vitro research use only