

GRP78 Bip Antibody

Catalog No: #39220

Orders: order@signalwayantibody.com

Support: tech@signalwayantibody.com

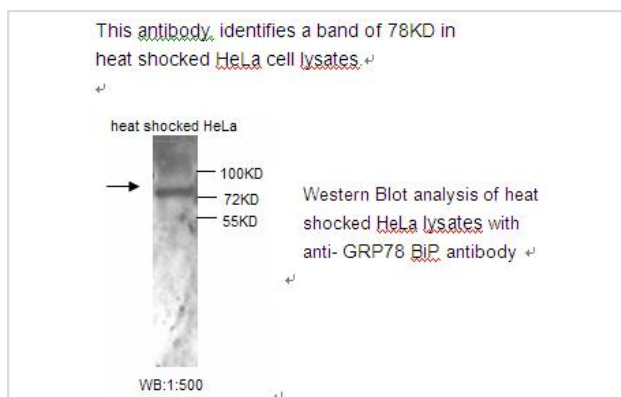
Description

Product Name	GRP78 Bip Antibody
Host Species	Rabbit
Clonality	Polyclonal
Purification	Purified
Applications	ELISA WB
Species Reactivity	Hu
Specificity	GRP78 Bip antibody detects endogenous levels of GRP78 Bip protein. Not tested with other proteins
Immunogen Type	Peptide-KLH
Immunogen Description	Synthetic peptide conjugated to KLH
Target Name	GRP78 Bip
Concentration	1.0mg/ml
Formulation	PBS, pH 7.4 with 0.02% Sodium Azide
Storage	This product is stable for several weeks at 4°C as an undiluted liquid. Dilute only prior to immediate use. For extended storage, aliquot contents and freeze at -20°C or below. Avoid cycles of freezing and thawing. Expiration date is one (1) year from date of receipt.

Application Details

ELISA WB: 1:500

Images



Note: This product is for in vitro research use only