

## PDGF-C Antibody

Catalog No: #39250

Orders: order@signalwayantibody.com

Support: tech@signalwayantibody.com

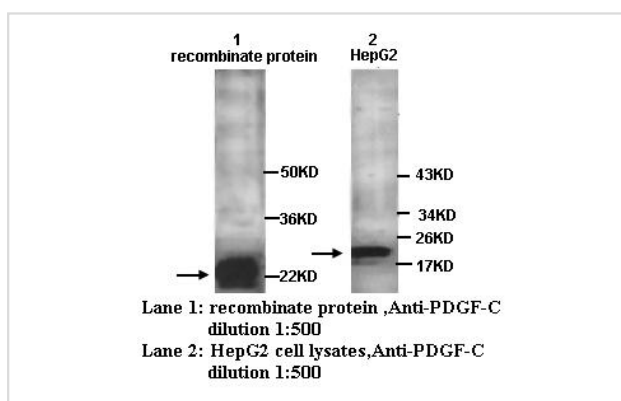
## Description

Product Name	PDGF-C Antibody
Host Species	Rabbit
Clonality	Polyclonal
Purification	Purified
Applications	ELISA WB
Species Reactivity	Hu Ms
Specificity	PDGF-C antibody detects endogenous levels and recombinant expression of PDGF-C protein. Not tested with other proteins
Immunogen Type	Peptide-KLH
Immunogen Description	peptide coupled to KLH
Target Name	PDGF-C
Concentration	1.0mg/ml
Formulation	PBS, pH 7.4 with 0.02% Sodium Azide
Storage	This product is stable for several weeks at 4°C as an undiluted liquid. Dilute only prior to immediate use. For extended storage, aliquot contents and freeze at -20°C or below. Avoid cycles of freezing and thawing. Expiration date is one (1) year from date of receipt.

## Application Details

ELISA WB: 1:500

## Images



Note: This product is for in vitro research use only