

## HES-5 Antibody

Catalog No: #39252

Orders: [order@signalwayantibody.com](mailto:order@signalwayantibody.com)Support: [tech@signalwayantibody.com](mailto:tech@signalwayantibody.com)

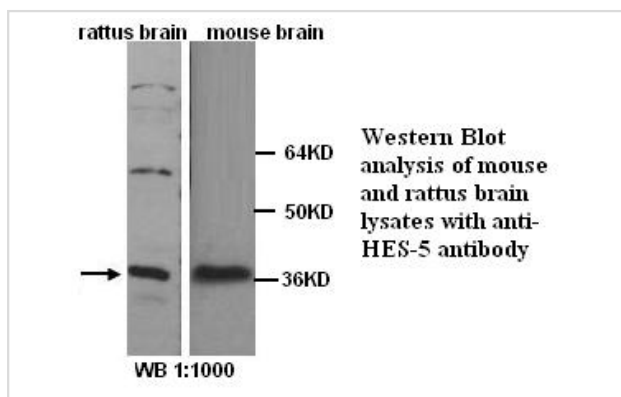
## Description

Product Name	HES-5 Antibody
Host Species	Rabbit
Clonality	Polyclonal
Purification	Peptide affinity purified
Applications	ELISA WB
Species Reactivity	Hu Ms Rt
Specificity	HES-5 antibody detects endogenous levels of HES-5 protein. Not tested with other proteins
Immunogen Type	Peptide-KLH
Immunogen Description	peptide from the intermediate residues of human HES-5 protein.
Target Name	HES-5
Concentration	1.0mg/ml
Formulation	PBS, pH 7.4 with 0.02% Sodium Azide
Storage	This product is stable for several weeks at 4°C as an undiluted liquid. Dilute only prior to immediate use. For extended storage, aliquot contents and freeze at -20°C or below. Avoid cycles of freezing and thawing. Expiration date is one (1) year from date of receipt.

## Application Details

ELISA WB: 1:1000

## Images



Note: This product is for in vitro research use only