

Calpain 6 Antibody

Catalog No: #39254

Orders: order@signalwayantibody.comSupport: tech@signalwayantibody.com

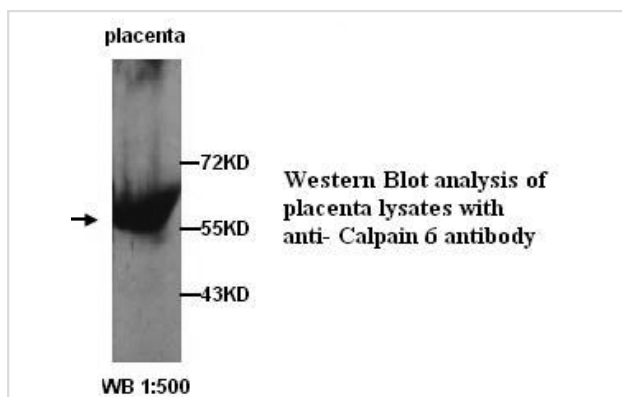
Description

Product Name	Calpain 6 Antibody
Host Species	Rabbit
Clonality	Polyclonal
Purification	Peptide affinity purified
Applications	ELISA WB
Species Reactivity	Hu Ms Rt
Specificity	Calpain 6 antibody detects endogenous levels of Calpain 6 protein. Not tested with other proteins
Immunogen Type	Peptide-KLH
Immunogen Description	peptide from near the C terminal residues of human Calpain 6 protein
Target Name	Calpain 6
Concentration	1.0mg/ml
Formulation	PBS, pH 7.4 with 0.02% Sodium Azide
Storage	This product is stable for several weeks at 4°C as an undiluted liquid. Dilute only prior to immediate use. For extended storage, aliquot contents and freeze at -20°C or below. Avoid cycles of freezing and thawing. Expiration date is one (1) year from date of receipt.

Application Details

ELISA WB: 1:500

Images



Note: This product is for in vitro research use only