

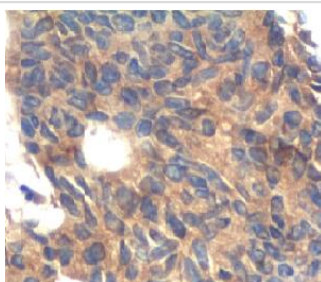
## Description

Product Name	p21 Antibody
Host Species	Rabbit
Clonality	Polyclonal
Purification	Affinity purified
Applications	ELISA WB IHC
Species Reactivity	Hu
Specificity	Not yet tested in other species.
Immunogen Type	Peptide-KLH
Immunogen Description	Synthetic peptide conjugated to KLH
Target Name	p21
Concentration	1.0mg/ml
Formulation	PBS, pH 7.4 with 0.02% Sodium Azide
Storage	This product is stable for several weeks at 4°C as an undiluted liquid. Dilute only prior to immediate use. For extended storage, aliquot contents and freeze at -20°C or below. Avoid cycles of freezing and thawing. Expiration date is one (1) year from date of receipt.

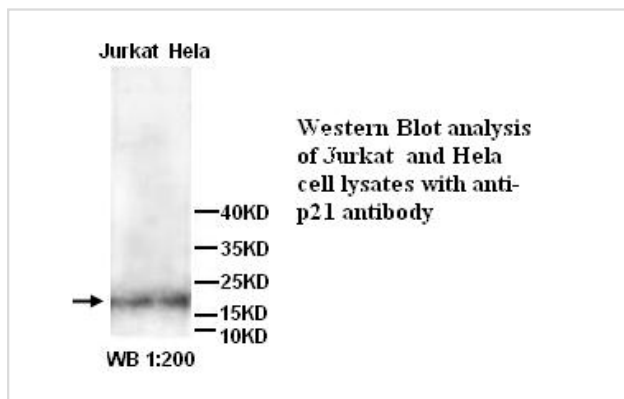
## Application Details

ELISA WB IHC

## Images



Immunohistochemical staining of formalin-fixed paraffin-embedded Colon carcinoma showing cytoplasmic and membrane staining with anti-p21 antibody  
dilution: 1:100 ( $\times 40$ )



---

Note: This product is for in vitro research use only