

MEK3 Antibody

Catalog No: #39271

Orders: order@signalwayantibody.comSupport: tech@signalwayantibody.com

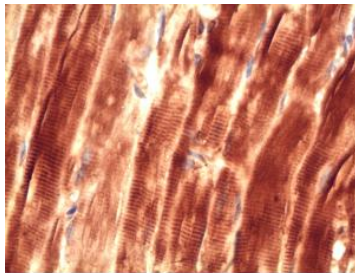
Description

Product Name	MEK3 Antibody
Host Species	Rabbit
Clonality	Polyclonal
Purification	Affinity purified
Applications	ELISA WB IHC
Species Reactivity	Hu Ms Rt
Specificity	Not yet tested in other species
Immunogen Type	Peptide-KLH
Immunogen Description	Synthetic peptide conjugated to KLH
Target Name	MEK3
Concentration	1.0mg/ml
Formulation	PBS, pH 7.4 with 0.02% Sodium Azide
Storage	This product is stable for several weeks at 4°C as an undiluted liquid. Dilute only prior to immediate use. For extended storage, aliquot contents and freeze at -20°C or below. Avoid cycles of freezing and thawing. Expiration date is one (1) year from date of receipt.

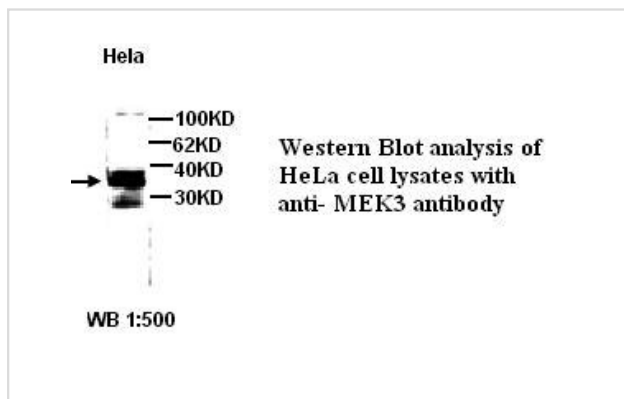
Application Details

ELISA WB IHC

Images



Immunohistochemical staining of formalin-fixed paraffin-embedded skeletal muscle showing cytoplasmic staining with anti-MEK3 antibody dilution: 1:200



Note: This product is for in vitro research use only