

## STK17A Antibody

Catalog No: #39288

Orders: [order@signalwayantibody.com](mailto:order@signalwayantibody.com)Support: [tech@signalwayantibody.com](mailto:tech@signalwayantibody.com)

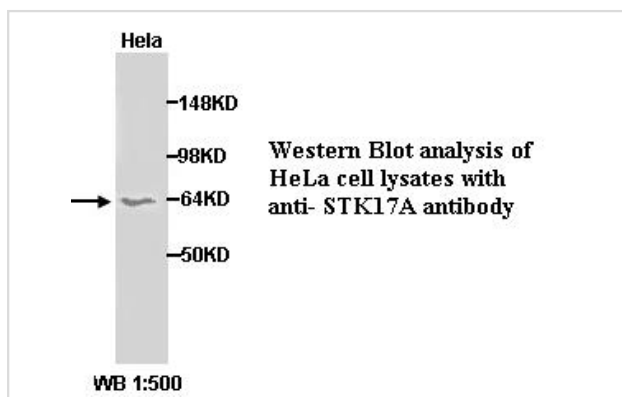
## Description

Product Name	STK17A Antibody
Host Species	Rabbit
Clonality	Polyclonal
Purification	Affinity purified
Applications	ELISA WB
Species Reactivity	Hu
Specificity	Not yet tested in other species
Immunogen Type	Peptide-KLH
Immunogen Description	a 14 amino acid peptide at the C terminal residues of human STK17a protein.
Target Name	STK17A
Concentration	1.0mg/ml
Formulation	PBS, pH 7.4 with 0.02% Sodium Azide
Storage	This product is stable for several weeks at 4°C as an undiluted liquid. Dilute only prior to immediate use. For extended storage, aliquot contents and freeze at -20°C or below. Avoid cycles of freezing and thawing. Expiration date is one (1) year from date of receipt.

## Application Details

ELISA WB

## Images



Note: This product is for in vitro research use only