

## caspase 1 Antibody

Catalog No: #39310

Orders: [order@signalwayantibody.com](mailto:order@signalwayantibody.com)Support: [tech@signalwayantibody.com](mailto:tech@signalwayantibody.com)

## Description

Product Name	caspase 1 Antibody
Host Species	Rabbit
Clonality	Polyclonal
Purification	Affinity purified
Applications	WB, IHC, IF
Species Reactivity	Human, Mouse, Rat
Specificity	Caspase-1 Polyclonal Antibody detects endogenous levels of Caspase-1
Immunogen Type	Peptide-KLH
Immunogen Description	Synthetic peptide conjugated to KLH
Target Name	CASP1; IL1BC; IL1BCE
Accession No.	Swiss-Prot#:P29466NCBI Gene ID:834
Calculated MW	45kDa
Concentration	1.0mg/ml
Formulation	Liquid in PBS containing 50% glycerol, 0.5% BSA and 0.02% sodium azide.
Storage	This product is stable for several weeks at 4°C as an undiluted liquid. Dilute only prior to immediate use. For extended storage, aliquot contents and freeze at -20°C or below. Avoid cycles of freezing and thawing. Expiration date is one (1) year from date of receipt.

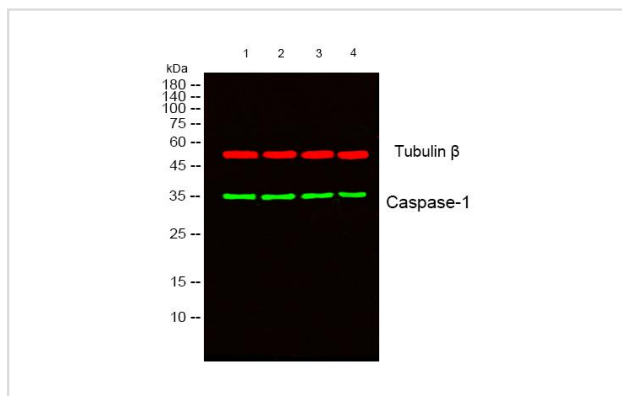
## Application Details

WB: 1:500-1:2,000

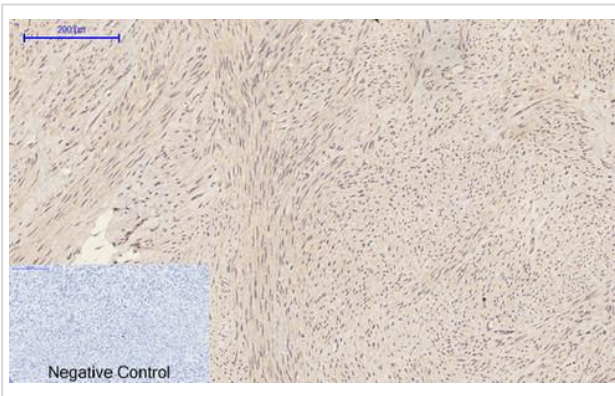
IHC: 1:50-1:300

IF: 1:50-1:200

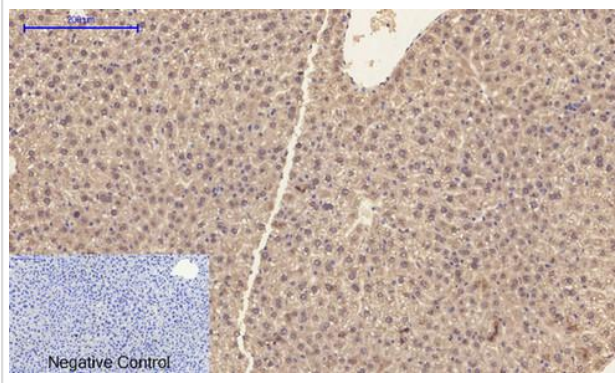
## Images



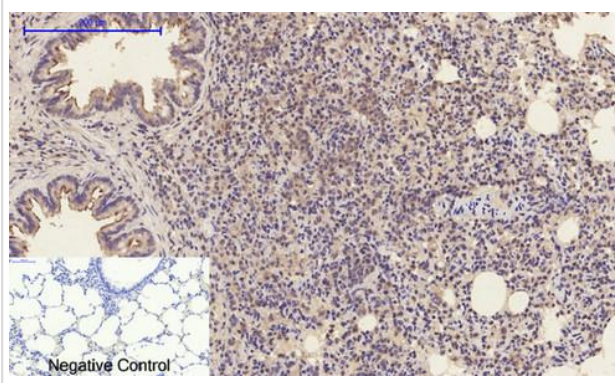
Western blot analysis of lysates from 1) 293T, 2) HeLa, 3) MCF-7, 4) HeLa-UV cells. oO GreenoO Primary antibody was diluted at 1:1000, 4°C overnight, oO RedoO Tubulin beta Monoclonal Antibody as loading control.



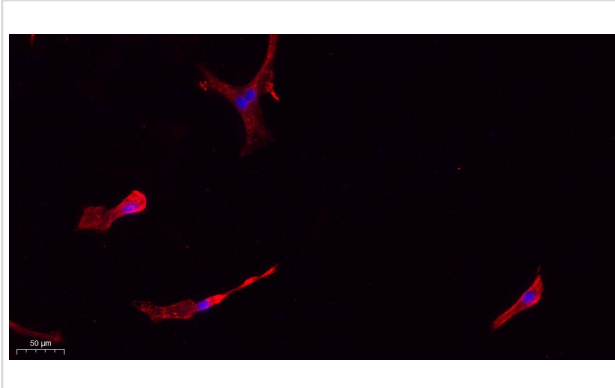
Immunohistochemical analysis of paraffin-embedded Human uterus tissue. 1, Primary antibody was diluted at 1:200(4°C,overnight). 2, Sodium citrate pH 6.0 was used for antibody retrieval(>98°C,20min). 3, Negative control was used by secondary antibody only.



Immunohistochemical analysis of paraffin-embedded Mouse liver tissue. 1, Primary antibody was diluted at 1:200(4°C,overnight). 2, Sodium citrate pH 6.0 was used for antibody retrieval(>98°C,20min). 3, Negative control was used by secondary antibody only.



Immunohistochemical analysis of paraffin-embedded Rat lung tissue. 1, Primary antibody was diluted at 1:200(4°C,overnight). 2, Sodium citrate pH 6.0 was used for antibody retrieval(>98°C,20min). 3, Negative control was used by secondary antibody only.



Immunofluorescence analysis of A549. 1, Primary Antibody(red) was diluted at 1:200 (4°C overnight). 2, Goat Anti Rabbit IgG (H&L) - Alexa Fluor 594 Secondary antibody was diluted at 1:1000 (room temperature, 50min). 3, DAPI(blue) 10min.

Note: This product is for in vitro research use only