

## AMPK1 Antibody

Catalog No: #39316

Orders: [order@signalwayantibody.com](mailto:order@signalwayantibody.com)Support: [tech@signalwayantibody.com](mailto:tech@signalwayantibody.com)

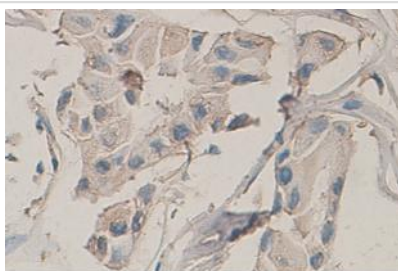
## Description

|                       |  |
|-----------------------|--|
| Product Name          | AMPK1 Antibody   |
| Host Species          | rabbit   |
| Clonality             | Polyclonal   |
| Purification          | Affinity purified  |
| Applications          | ELISA WB IHC   |
| Species Reactivity    | Hu Ms Rt   |
| Immunogen Type        | Peptide-KLH  |
| Immunogen Description | Rabbit polyclonal AMPK1 antibody was raised against a 15 amino acid peptide from near the intermediate residues of human AMPK1 protein.  |
| Target Name           | AMPK1  |
| Concentration         | 1.0mg/ml   |
| Formulation           | PBS, pH 7.4 with 0.02% Sodium Azide  |
| Storage               | This product is stable for several weeks at 4°C as an undiluted liquid. Dilute only prior to immediate use. For extended storage, aliquot contents and freeze at -20°C or below. Avoid cycles of freezing and thawing. Expiration date is one (1) year from date of receipt. |

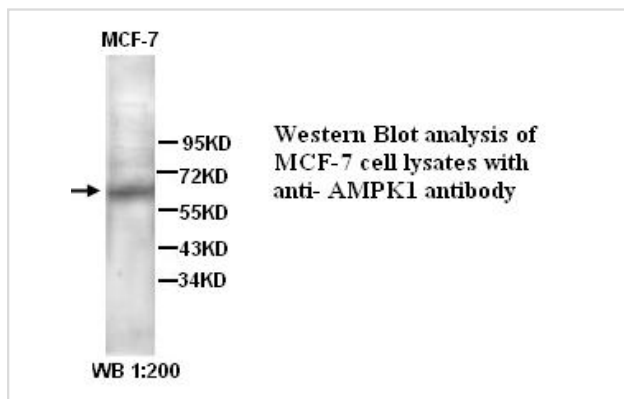
## Application Details

ELISA WB IHC

## Images



Immunohistochemical staining of formalin-fixed paraffin-embedded breast carcinoma showing cytoplasmic staining with anti-AMPK1 antibody dilution: 1:100.



---

Note: This product is for in vitro research use only