

## Aquaporin10 Antibody

Catalog No: #39320

Orders: [order@signalwayantibody.com](mailto:order@signalwayantibody.com)Support: [tech@signalwayantibody.com](mailto:tech@signalwayantibody.com)

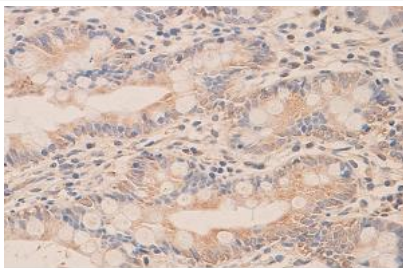
## Description

Product Name	Aquaporin10 Antibody
Host Species	Rabbit
Clonality	Polyclonal
Purification	Affinity purified
Applications	ELISA IHC
Species Reactivity	Hu
Immunogen Type	Peptide-KLH
Immunogen Description	Rabbit polyclonal Aquaporin10 antibody was raised against a 15 amino acid peptide from near the C terminal residues of human Aquaporin10.
Target Name	Aquaporin10
Concentration	1.0mg/ml
Formulation	PBS, pH 7.4 with 0.02% Sodium Azide
Storage	This product is stable for several weeks at 4°C as an undiluted liquid. Dilute only prior to immediate use. For extended storage, aliquot contents and freeze at -20°C or below. Avoid cycles of freezing and thawing. Expiration date is one (1) year from date of receipt.

## Application Details

ELISA IHC

## Images



**Immunohistochemical staining of formalin-fixed paraffin-embedded intestine showing membrane staining with anti-Aquaporin10 antibody dilution: 1:100.**

Note: This product is for in vitro research use only