

P311 Antibody

Catalog No: #39353

Orders: order@signalwayantibody.comSupport: tech@signalwayantibody.com

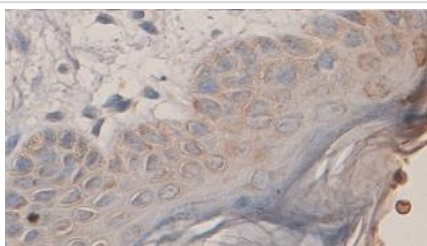
Description

Product Name	P311 Antibody
Host Species	Rabbit
Clonality	Polyclonal
Purification	Purified by antigen affinity column.
Applications	WB;IHC;ELISA
Species Reactivity	Human. Predicted: Rat, Mus
Immunogen Type	Peptide-KLH
Immunogen Description	A peptide corresponding to the C terminal region of human NREP protein.
Target Name	P311
Calculated MW	8kDa
Concentration	1.0mg/ml
Formulation	FormulationoO Lyophilized powder with 1% BSA and 0.02% NaN3 or liquid with 1% BSA oO 0.02% NaN3oO sterile H2O and 50% glycerol.
Storage	Shipped at ambient temperature or with ice bags if in liquid. Store immediately at -20°C upon receipt. Avoid repeating freeze-thaw cycles.

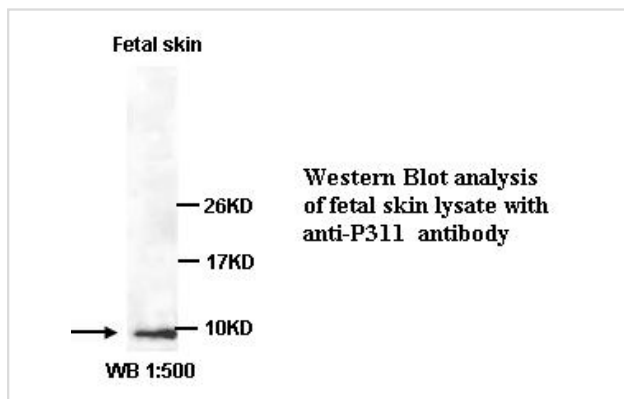
Application Details

WB 1:500-2000 IHC 1:100-200 ELISA 1oO 20000-1oO 80000

Images



Immunohistochemical staining of formalin-fixed paraffin-embedded fetal skin showing cytoplasmic staining with anti-P311 antibody at a dilution of 1/100.



Note: This product is for in vitro research use only