

CCNA2 Antibody

Catalog No: #39386

Orders: order@signalwayantibody.comSupport: tech@signalwayantibody.com

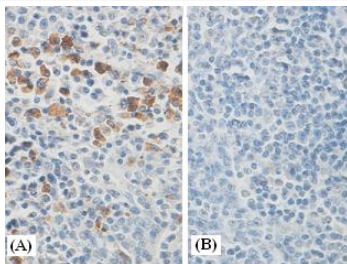
Description

| | |
|-----------------------|--|
| Product Name | CCNA2 Antibody |
| Host Species | Rabbit |
| Clonality | Polyclonal |
| Purification | Affinity purified |
| Applications | WB IHC |
| Species Reactivity | Hu |
| Specificity | Human |
| Immunogen Type | Peptide-KLH |
| Immunogen Description | Peptide |
| Target Name | CCNA2 |
| Concentration | 1.0mg/ml |
| Formulation | PBS, pH 7.4 with 0.02% Sodium Azide |
| Storage | This product is stable for several weeks at 4°C as an undiluted liquid. Dilute only prior to immediate use. For extended storage, aliquot contents and freeze at -20°C or below. Avoid cycles of freezing and thawing. Expiration date is one (1) year from date of receipt. |

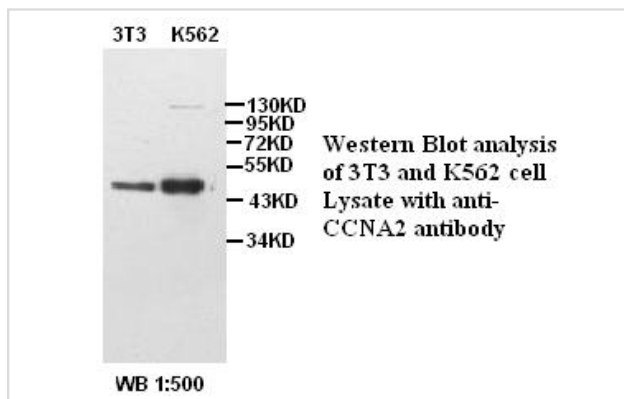
Application Details

WB IHC

Images



Immunohistochemical staining of formalin-fixed paraffin-embedded fetal tonsil showing nuclear staining with anti-CCNA2 antibody at a dilution of 1/100 (A). Block with immunizing peptide (B).



Note: This product is for in vitro research use only