

## ADRA1C Antibody

Catalog No: #39387

Orders: [order@signalwayantibody.com](mailto:order@signalwayantibody.com)Support: [tech@signalwayantibody.com](mailto:tech@signalwayantibody.com)

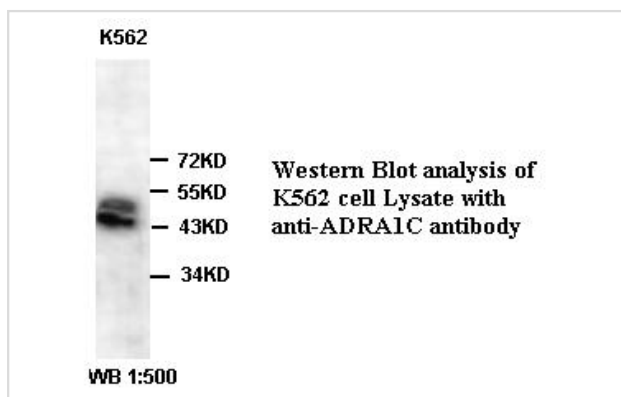
## Description

|                       |  |
|-----------------------|--|
| Product Name          | ADRA1C Antibody  |
| Host Species          | Rabbit   |
| Clonality             | Polyclonal   |
| Purification          | Affinity purified  |
| Applications          | WB   |
| Species Reactivity    | Hu Ms Rt   |
| Specificity           | Human?????B'B—Mouse, Rattus  |
| Immunogen Type        | Peptide-KLH  |
| Immunogen Description | Peptide  |
| Target Name           | ADRA1C   |
| Concentration         | 1.0mg/ml   |
| Formulation           | PBS, pH 7.4 with 0.02% Sodium Azide  |
| Storage               | This product is stable for several weeks at 4°C as an undiluted liquid. Dilute only prior to immediate use. For extended storage, aliquot contents and freeze at -20°C or below. Avoid cycles of freezing and thawing. Expiration date is one (1) year from date of receipt. |

## Application Details

WB

## Images



Note: This product is for in vitro research use only