

## Heme oxygenase 1 Antibody

Catalog No: #39422

Orders: [order@signalwayantibody.com](mailto:order@signalwayantibody.com)Support: [tech@signalwayantibody.com](mailto:tech@signalwayantibody.com)

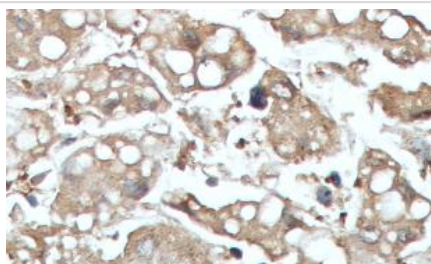
## Description

Product Name	Heme oxygenase 1 Antibody
Host Species	Rabbit
Clonality	Polyclonal
Purification	Affinity purified
Applications	WB IHC
Species Reactivity	Hu
Specificity	Human
Immunogen Type	Recombinant Protein
Immunogen Description	Recombinant protein
Target Name	Heme oxygenase 1
Concentration	1.0mg/ml
Formulation	PBS, pH 7.4 with 0.02% Sodium Azide
Storage	This product is stable for several weeks at 4°C as an undiluted liquid. Dilute only prior to immediate use. For extended storage, aliquot contents and freeze at -20°C or below. Avoid cycles of freezing and thawing. Expiration date is one (1) year from date of receipt.

## Application Details

WB IHC

## Images



**Immunohistochemical staining of formalin-fixed paraffin-embedded fetal liver showing Cytoplasmic staining with anti-Heme Oxygenase 1 antibody at a dilution of 1/100.**

MCF7 Jurkat



— 55KD  
— 43KD  
— 34KD  
— 26KD

Western Blot analysis  
of MCF7 and Jurkat  
cell Lysate with anti  
Heme oxygenase 1  
antibody

WB 1:1000

---

Note: This product is for in vitro research use only