

## NPSR1 Antibody

Catalog No: #39424

Orders: [order@signalwayantibody.com](mailto:order@signalwayantibody.com)Support: [tech@signalwayantibody.com](mailto:tech@signalwayantibody.com)

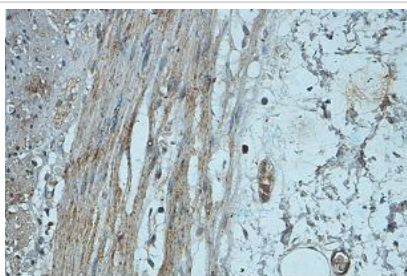
## Description

Product Name	NPSR1 Antibody
Host Species	Rabbit
Clonality	Polyclonal
Purification	Affinity purified
Applications	WB IHC
Species Reactivity	Hu
Specificity	Human
Immunogen Type	Peptide-KLH
Immunogen Description	Peptide
Target Name	NPSR1
Concentration	1.0mg/ml
Formulation	PBS, pH 7.4 with 0.02% Sodium Azide
Storage	This product is stable for several weeks at 4°C as an undiluted liquid. Dilute only prior to immediate use. For extended storage, aliquot contents and freeze at -20°C or below. Avoid cycles of freezing and thawing. Expiration date is one (1) year from date of receipt.

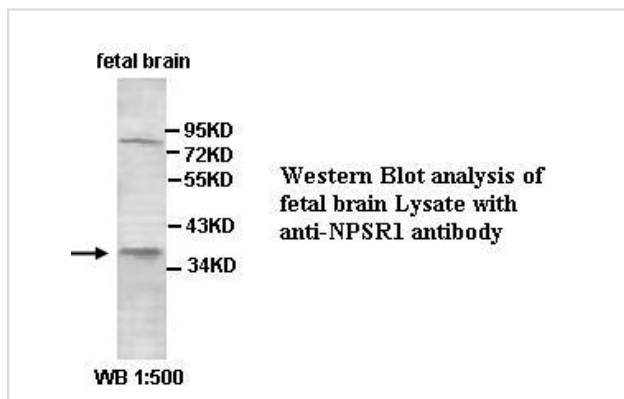
## Application Details

WB IHC

## Images



**Immunohistochemical staining of formalin-fixed paraffin-embedded fetal small intestine showing membrane staining with anti-NPSR1 antibody at a dilution of 1/100.**



Note: This product is for in vitro research use only